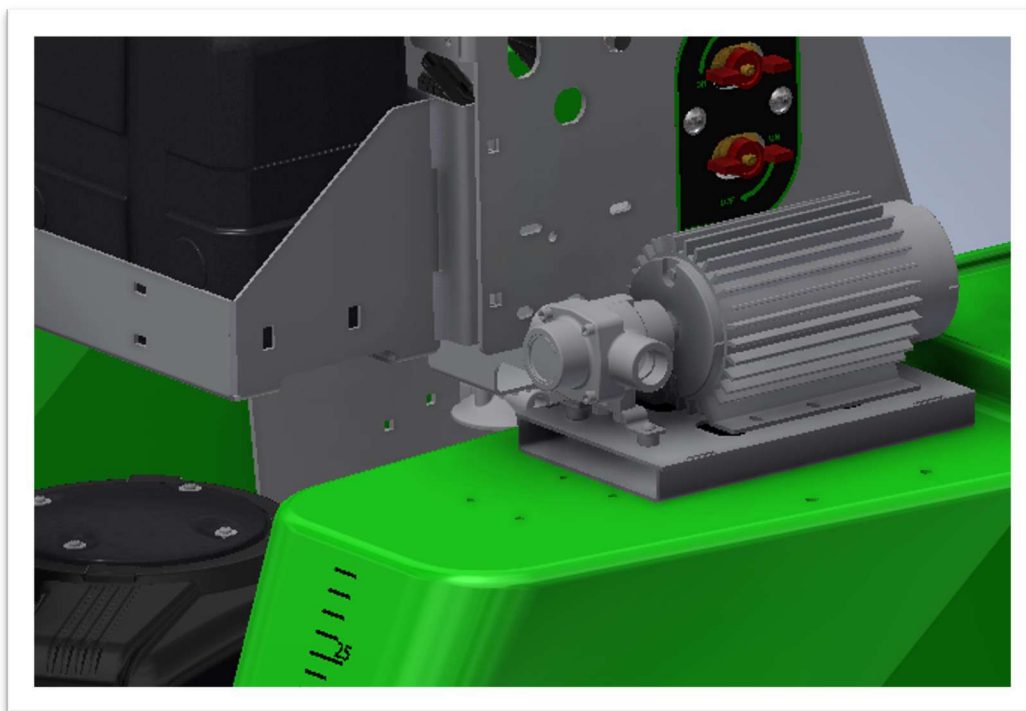


INSTRUCTION MANUAL

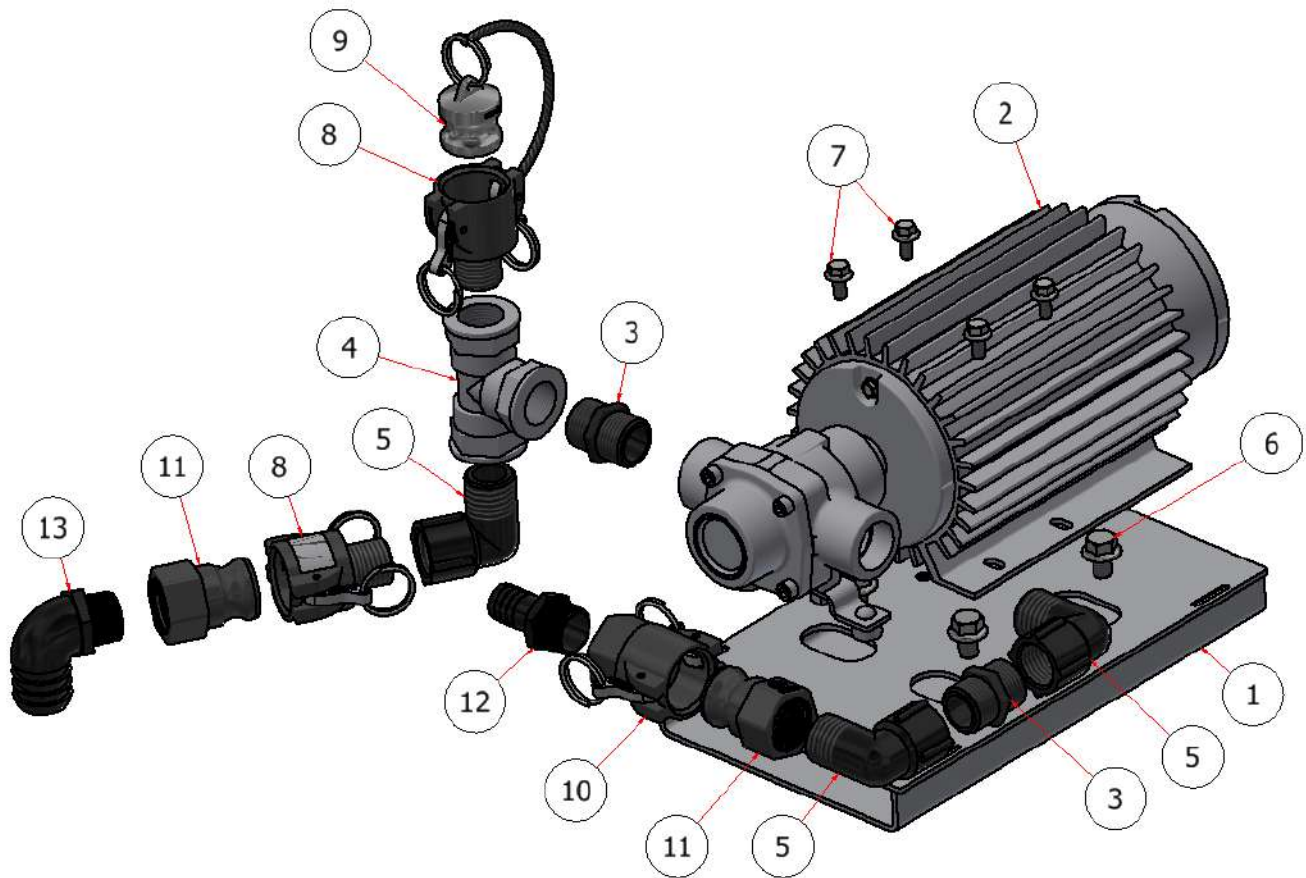
HI FLOW PUMP

Models: SG36, SG42, SG46, & SG52



HI FLOW PUMP

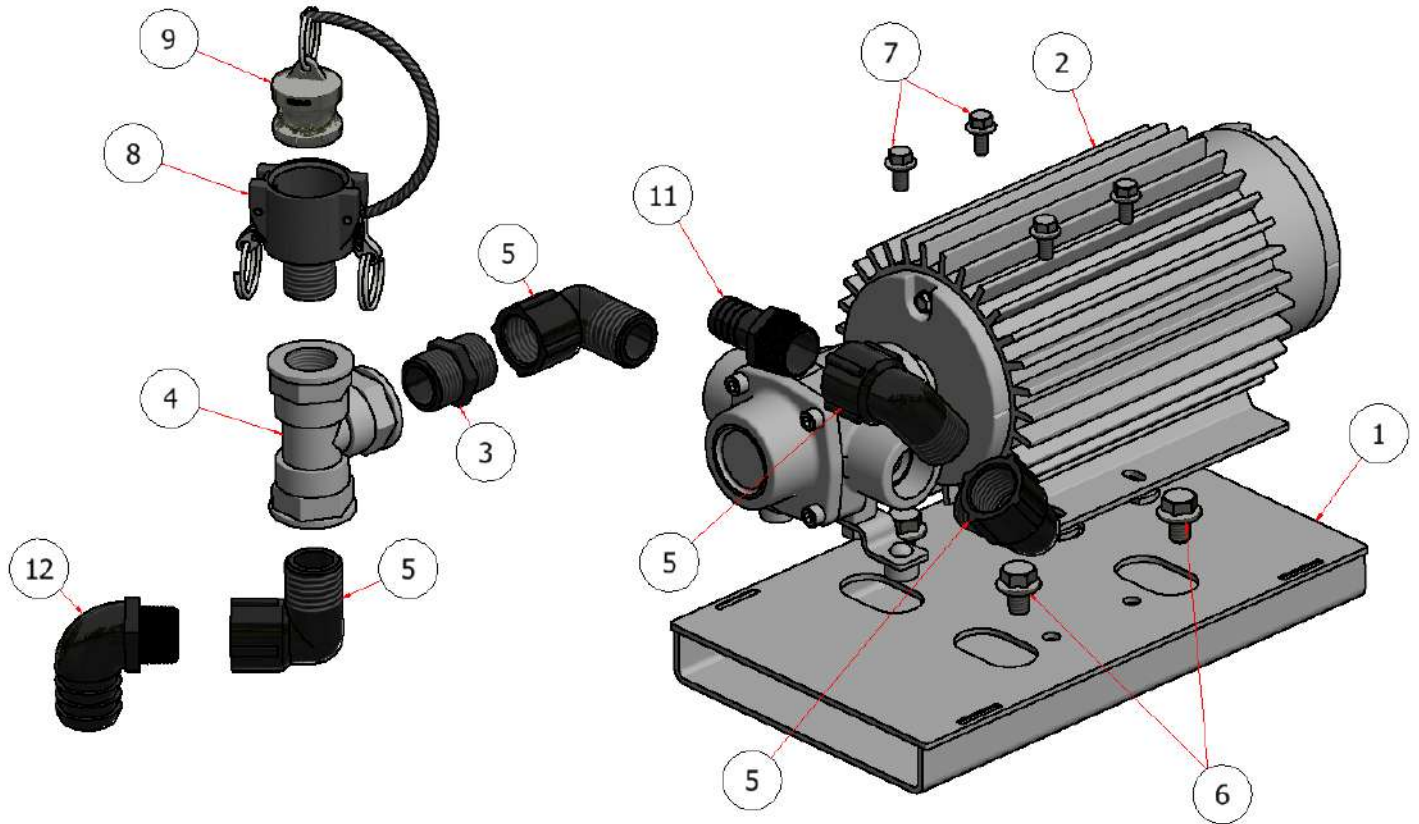
HI-FLOW PUMP SG 46\52



HI FLOW PUMP			
ITEM	QTY	PART NUMBER	DESCRIPTION
1	1	W22-007	BASE, HI FLOW PUMP
2	1	4001N-E2H	PUMP, HI-FLOW
3	2	S52063	3/4 X 3/4 ST
4	1	S52006	TEE, BANJIO, 3/4
5	4	S52041	90 ELBOW, 3/4 MNPT X 3/4 FNPT
6	4	HFSSC-3812	HEX BOLT, 3/8" X 1/2"
7	4	HFSSC-145	HEX FLANGE BOLT, SS - 1/4-20 x 1/2
8	1	S51304	QD, 3/4" MNPT X 3/4" FNPT
9	1	S51303	QD, PLUG
10	1	S51297	QD, 3/4" COUPLER X 3/4" NPT
11	2	S51298	QD MALE, X 3/4" FNPT
12	2	S52015	3/4" MNPT X 3/4" BARB
13	2	EL100 HB	3/4 X 1 BARB ELBOW

HI FLOW PUMP

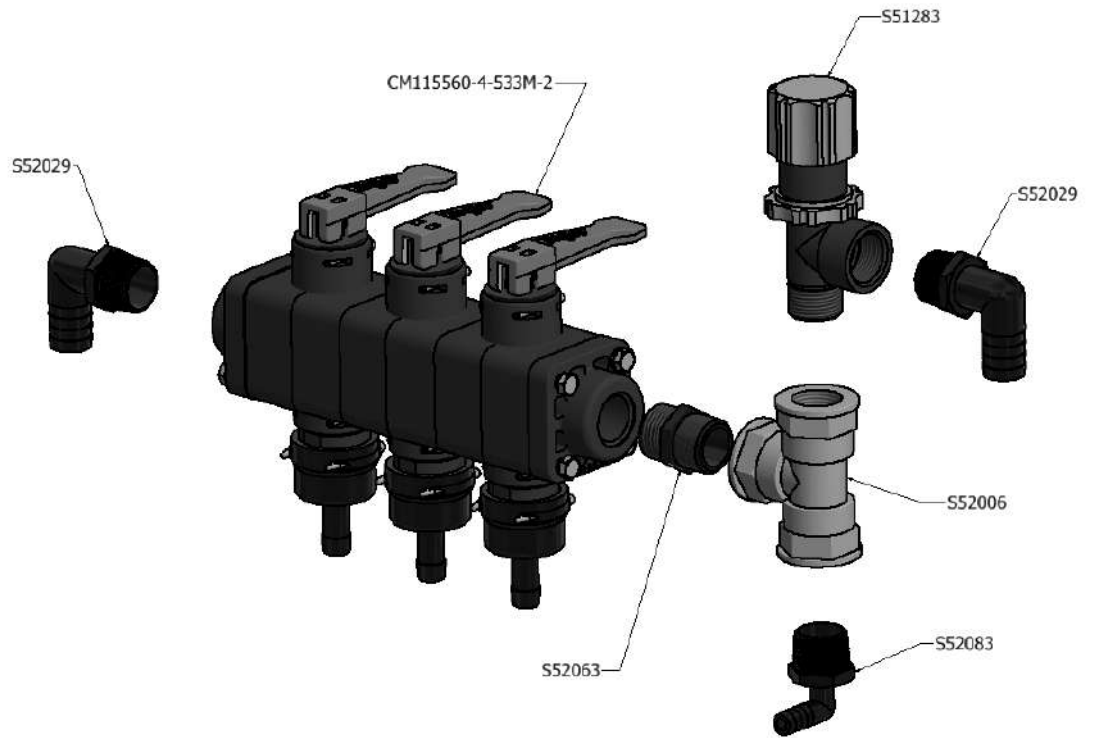
HI-FLOW PUMP SG 36



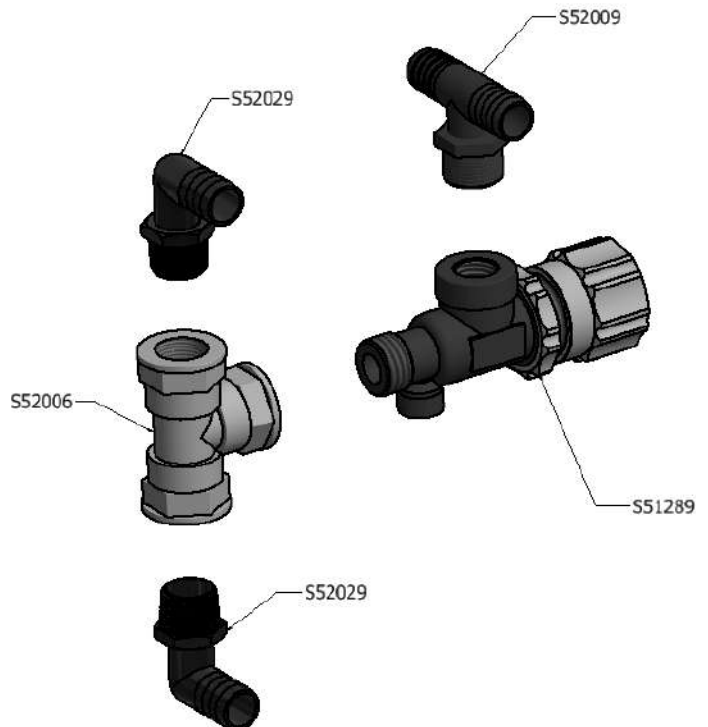
HI FLOW PUMP SG36			
ITEM	QTY	PART NUMBER	DESCRIPTION
1	1	W22-007	PUMP BASE, HI-FLOW
2	1	4001N-E2H	PUMP, HI-FLOW
3	3	S52063	3/4 X 3/4 ST
4	1	S52006	TEE, BANJIO, 3/4
5	5	S52041	90 ELBOW, 3/4 MNPT X 3/4 FNPT
6	4	HFSSC-3812	HEX BOLT, 3/8" X 1/2"
7	4	HFSSC-145	HEX FLANGE BOLT, SS - 1/4-20 x 1/2
8	1	S51304	QD, 3/4" FNPT X 3/4" MNPT
9	1	S51303	QD, 3/4" PLUG
10	2	S51297	3/4" COUPLER X 3/4" NPT
11	2	S52015	3/4" MNPT X 3/4" BARB
12	2	EL100 HB	3/4 X 1 BARB ELBOW

HI FLOW PUMP

Spray Manifold Assembly.



Regulator Assembly



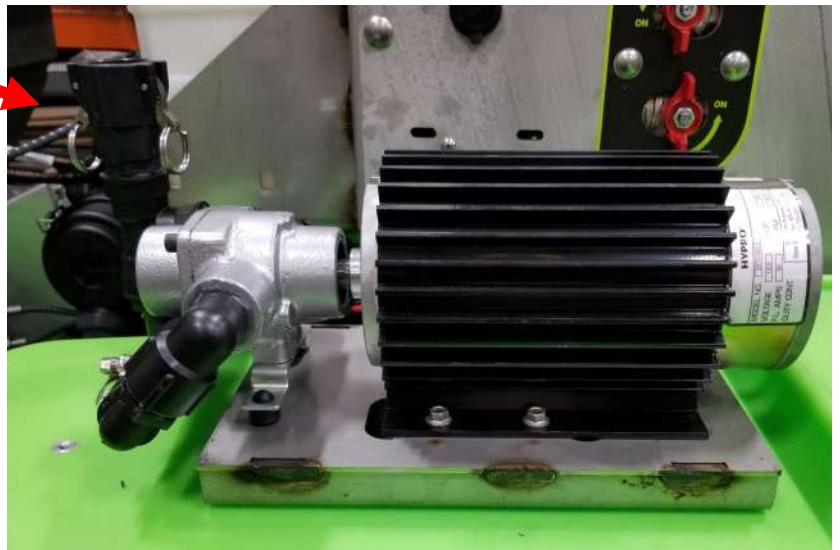
HI FLOW PUMP

Spray Manifold Assembly.



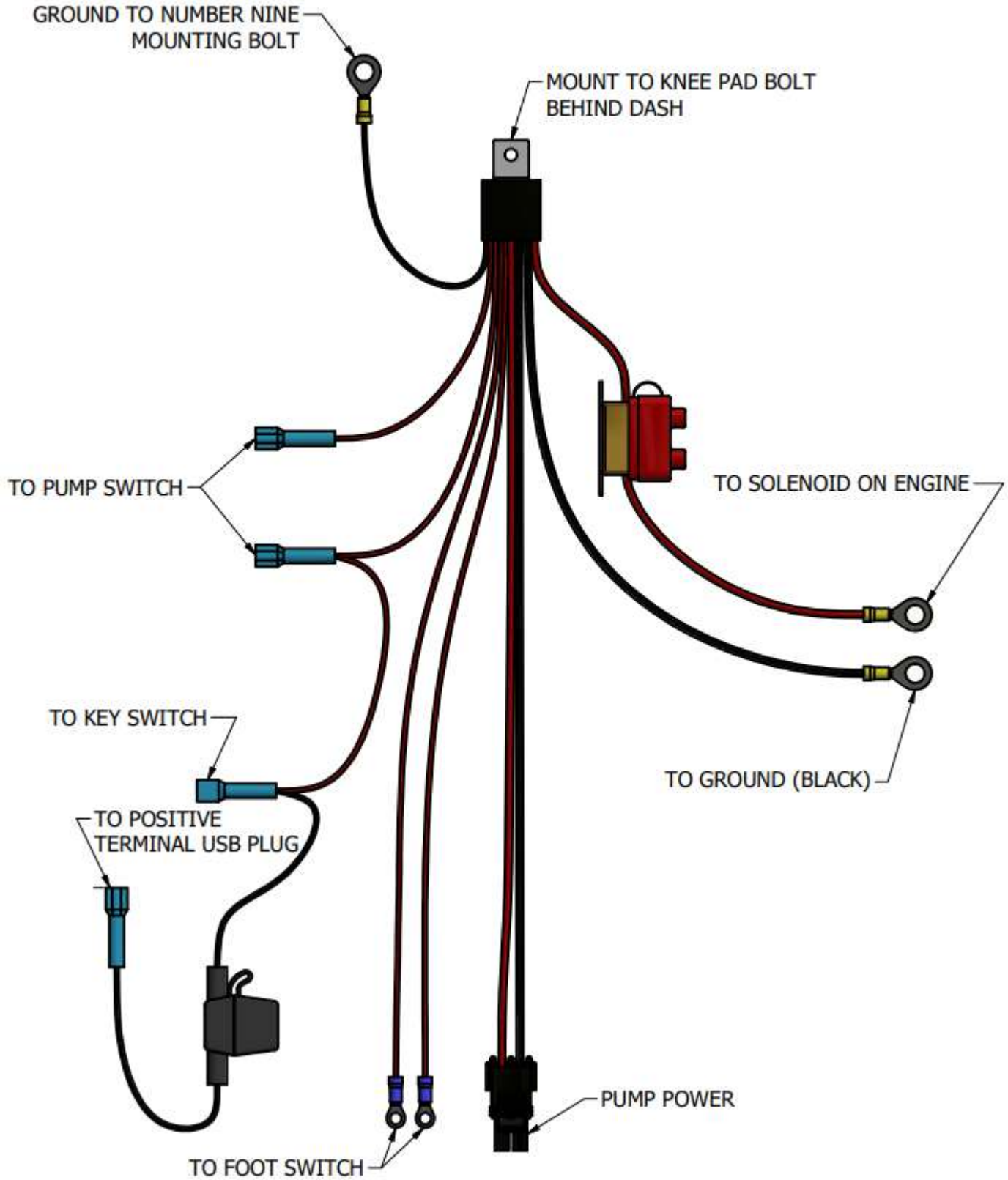
Pressure control valve

Back flush port / clean out.
Can be used for prime.



HI FLOW PUMP

HI-FLOW PUMP HARNESS



HI FLOW PUMP

STEP ONE: Disconnect the battery, *ground* first and then *power* wire.



GROUND

POWER

NOTE: Before starting the following steps the existing pump wiring harness and standard pump will need to be removed.

STEP TWO: Cut and install the “tee” fitting and regulator assembly in the return hose, securely with hose clamps.

NOTE: The regulator should face the operator and be clear of the steering rod.



“tee fitting” S50062

STEERING ROD

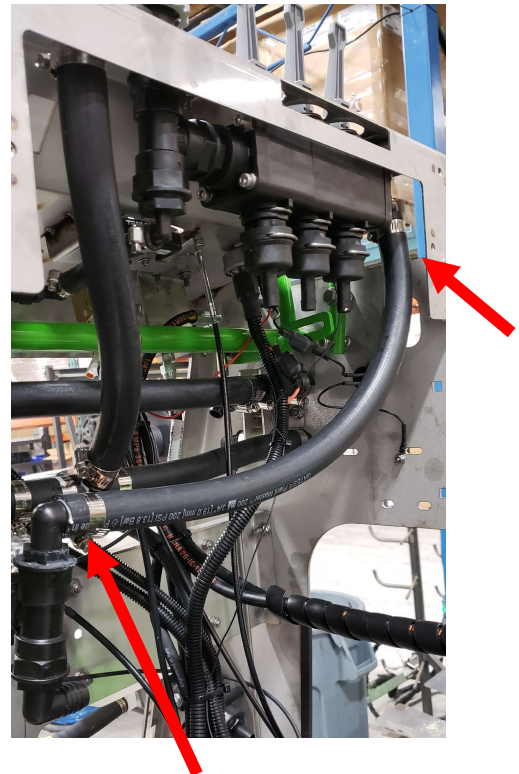
HI FLOW PUMP

STEP THREE:

- Cut and connect a 3/4" hose from "tee" fitting (S50062) up to the throttle valve 3/4" elbow (S52041).
- Cut and connect a 3/8" hose from "elbow" fitting (S52083) to the pressure gauge.

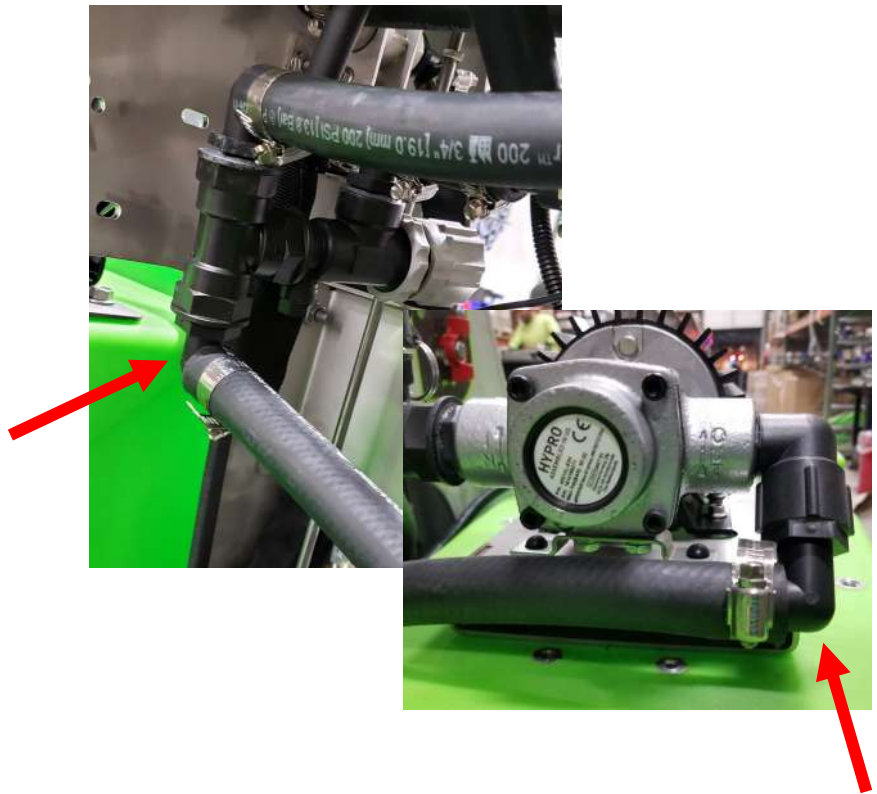


- **STEP FOUR:** Cut and connect a 3/4" hose from the top banjo fitting to the end of the manifold.

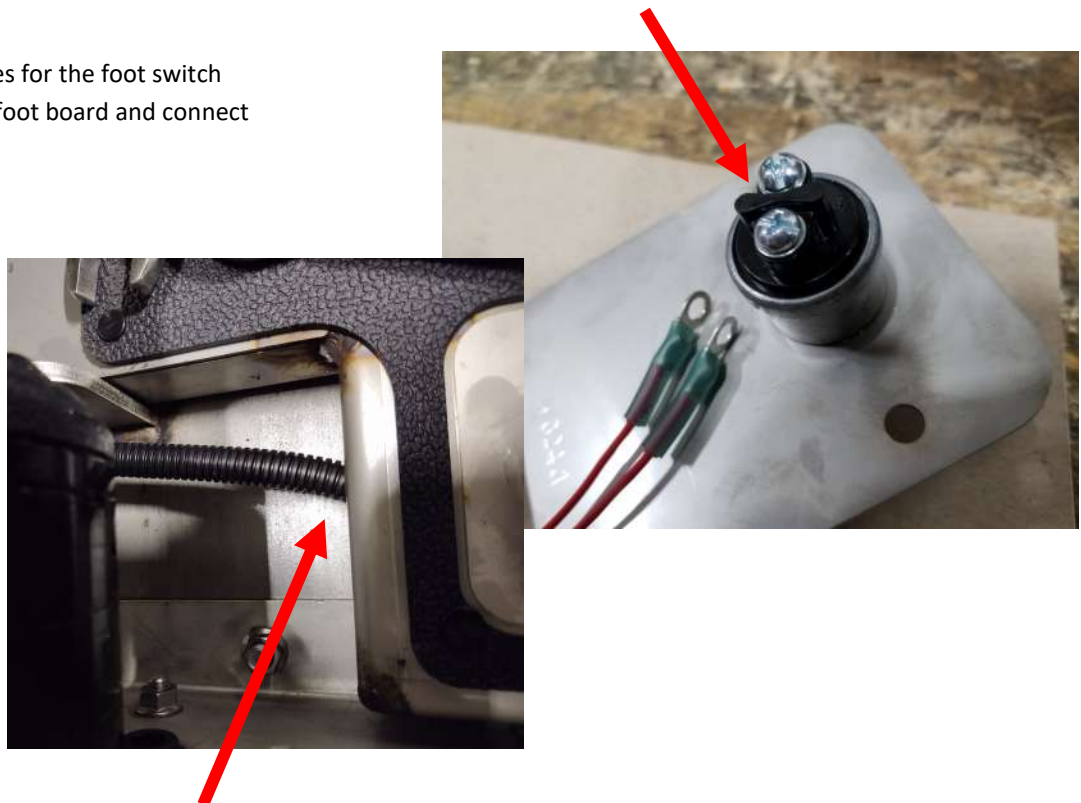


HI FLOW PUMP

STEP FIVE: Cut and connect a 3/4" hose from lower banjo fitting, to hi flow pump outlet.



STEP SIX: Route the wires for the foot switch through the hole in the foot board and connect them to the foot switch.



HI FLOW PUMP

STEP SEVEN: Route the wires for the foot switch through the hole in the foot board and connect them to the foot switch.



STEP EIGHT: Connect the pump power switch wires to the “rocker switch”



HI FLOW PUMP

STEP NINE: Connect the ignition plug to the ignition switch on the dash panel.



STEP TEN: Connect the “fused” connector to the “usb” port.



HI FLOW PUMP

STEP ELEVEN: Connect the lower ground wire to the up right cross member.



STEP TWELVE: Connect the pump plug from the harness to the pump.



HI FLOW PUMP

STEP THIRTEEN: Reconnect the battery, *power* wire first along with pump harness power wire and then *ground*.



GROUND

POWER



Steel Green Mfg.
 824 S State Road 39
 Lebanon, IN 46052
 (765)-481-2890
www.steelgreenmfg.com

MANUAL PART NO.	MANUAL REV.	DESCRIPTION	KIT PART NO.
SGM-020	B	SG HI FLOW PUMP	A60000-46 A60000-52