

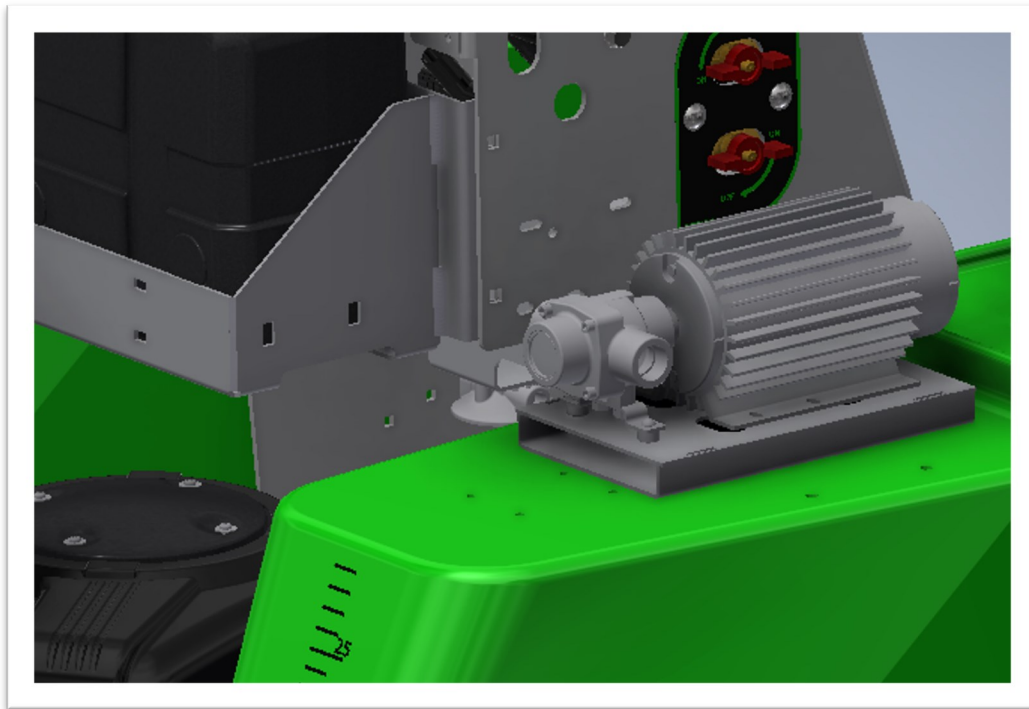
# STEELGREEN<sup>™</sup>

## MANUFACTURING

### INSTRUCTION MANUAL

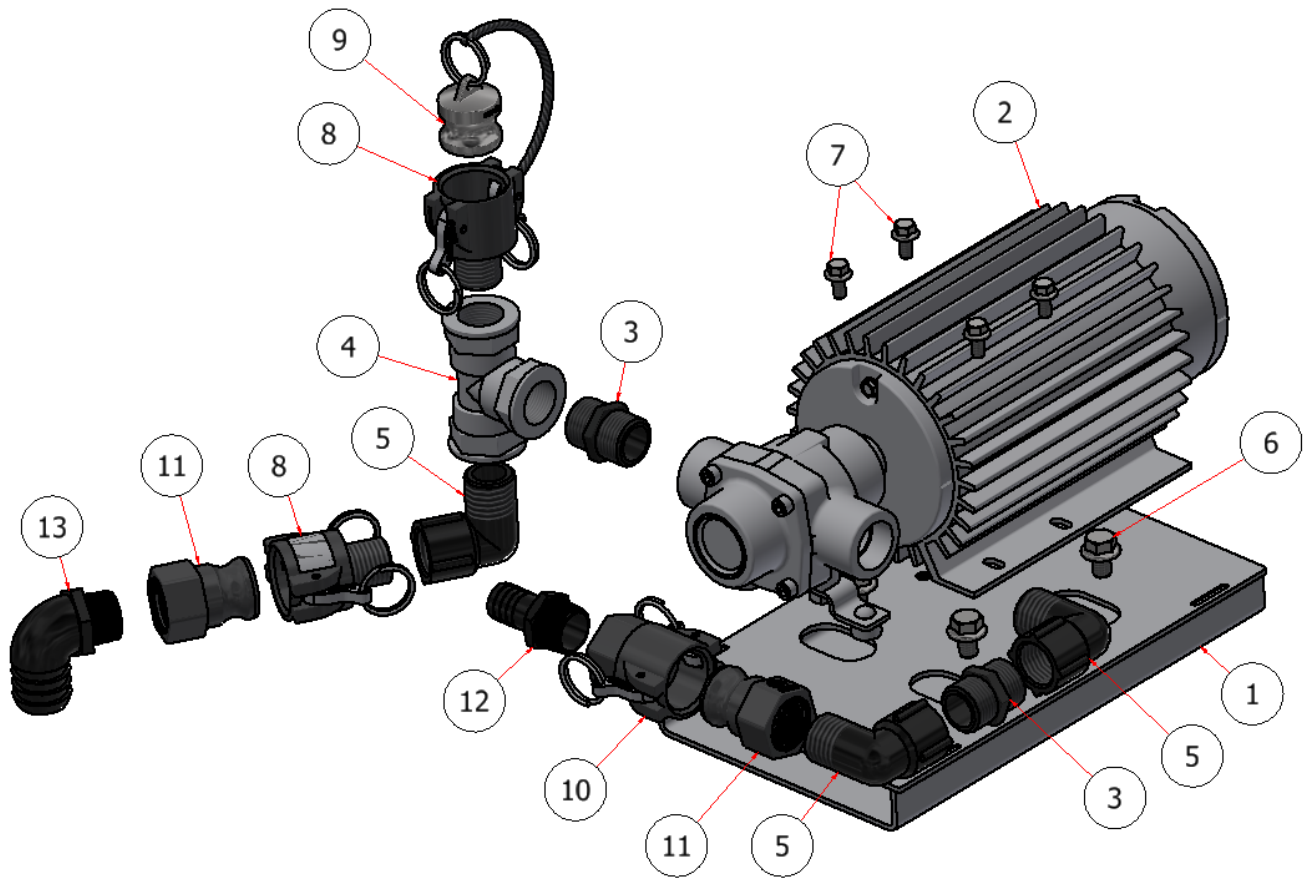
#### HI FLOW PUMP

Models: SG36, SG42, SG46, & SG52



# HI FLOW PUMP

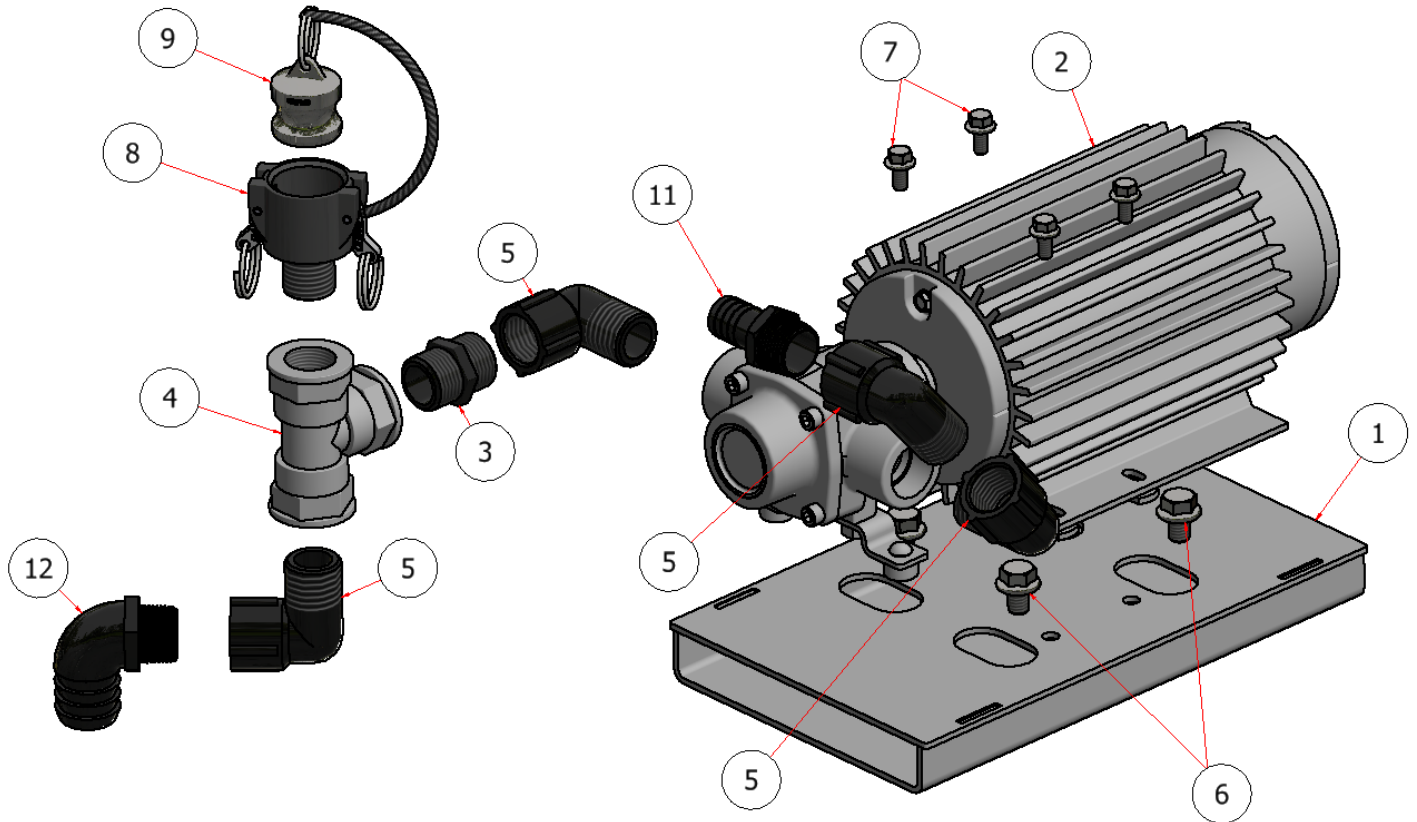
## HI-FLOW PUMP SG 46\52



| HI FLOW PUMP |     |             |                                    |
|--------------|-----|-------------|------------------------------------|
| ITEM         | QTY | PART NUMBER | DESCRIPTION                        |
| 1            | 1   | W22-007     | BASE, HI FLOW PUMP                 |
| 2            | 1   | S54014      | PUMP, HI-FLOW                      |
| 3            | 2   | S52063      | 3/4 X 3/4 ST                       |
| 4            | 1   | S52006      | TEE, BANJIO, 3/4                   |
| 5            | 4   | S52041      | 90 ELBOW, 3/4 MNPT X 3/4 FNPT      |
| 6            | 4   | HFSSC-3812  | HEX BOLT, 3/8" X 1/2"              |
| 7            | 4   | HFSSC-145   | HEX FLANGE BOLT, SS - 1/4-20 x 1/2 |
| 8            | 1   | S51304      | QD, 3/4" MNPT X 3/4" FNPT          |
| 9            | 1   | S51303      | QD, PLUG                           |
| 10           | 1   | S51297      | QD, 3/4" COUPLER X 3/4" NPT        |
| 11           | 2   | S51298      | QD MALE, X 3/4" FNPT               |
| 12           | 2   | S52015      | 3/4" MNPT X 3/4" BARB              |
| 13           | 2   | EL100 HB    | 3/4 X 1 BARB ELBOW                 |

# HI FLOW PUMP

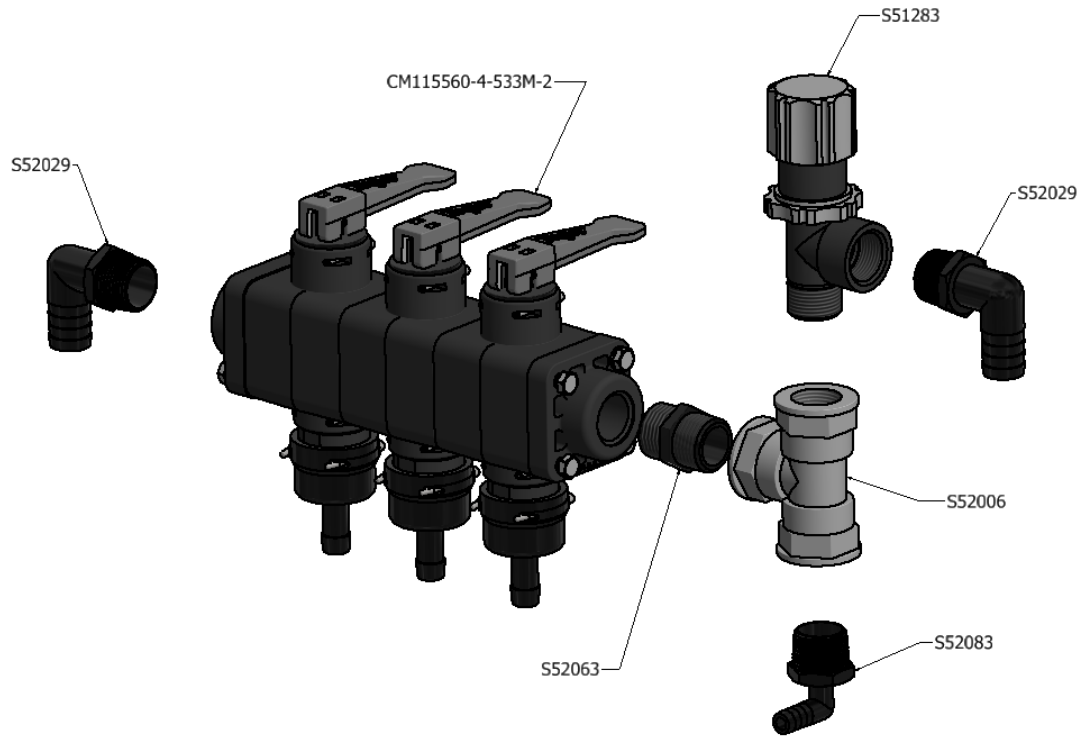
## HI-FLOW PUMP SG 36



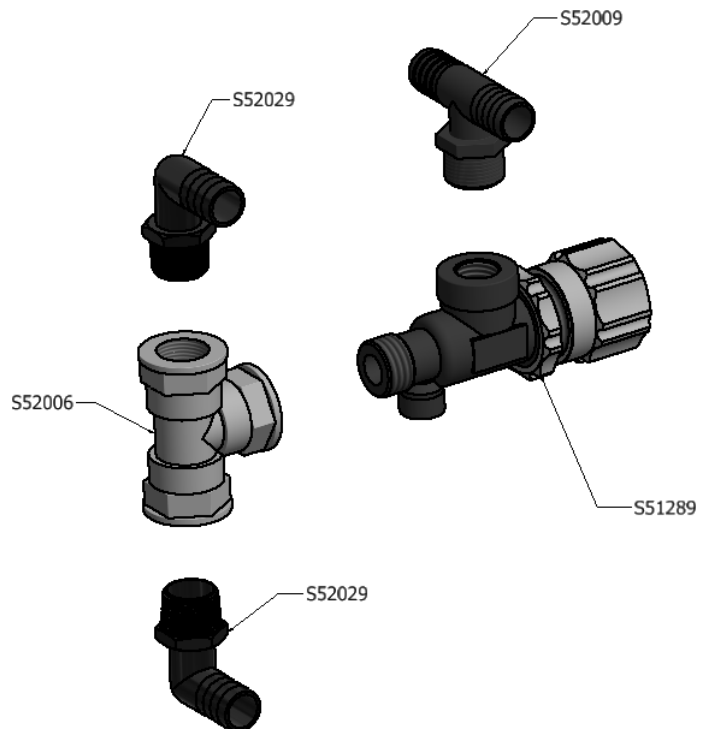
| HI FLOW PUMP SG36 |     |             |                                    |
|-------------------|-----|-------------|------------------------------------|
| ITEM              | QTY | PART NUMBER | DESCRIPTION                        |
| 1                 | 1   | W22-007     | PUMP BASE, HI-FLOW                 |
| 2                 | 1   | S54014      | PUMP, HI-FLOW                      |
| 3                 | 3   | S52063      | 3/4 X 3/4 ST                       |
| 4                 | 1   | S52006      | TEE, BANJIO, 3/4                   |
| 5                 | 5   | S52041      | 90 ELBOW, 3/4 MNPT X 3/4 FNPT      |
| 6                 | 4   | HFSSC-3812  | HEX BOLT, 3/8" X 1/2"              |
| 7                 | 4   | HFSSC-145   | HEX FLANGE BOLT, SS - 1/4-20 x 1/2 |
| 8                 | 1   | S51304      | QD, 3/4" FNPT X 3/4" MNPT          |
| 9                 | 1   | S51303      | QD, 3/4" PLUG                      |
| 10                | 2   | S51297      | 3/4" COUPLER X 3/4" NPT            |
| 11                | 2   | S52015      | 3/4" MNPT X 3/4" BARB              |
| 12                | 2   | EL100 HB    | 3/4 X 1 BARB ELBOW                 |

# HI FLOW PUMP

Spray Manifold Assembly.

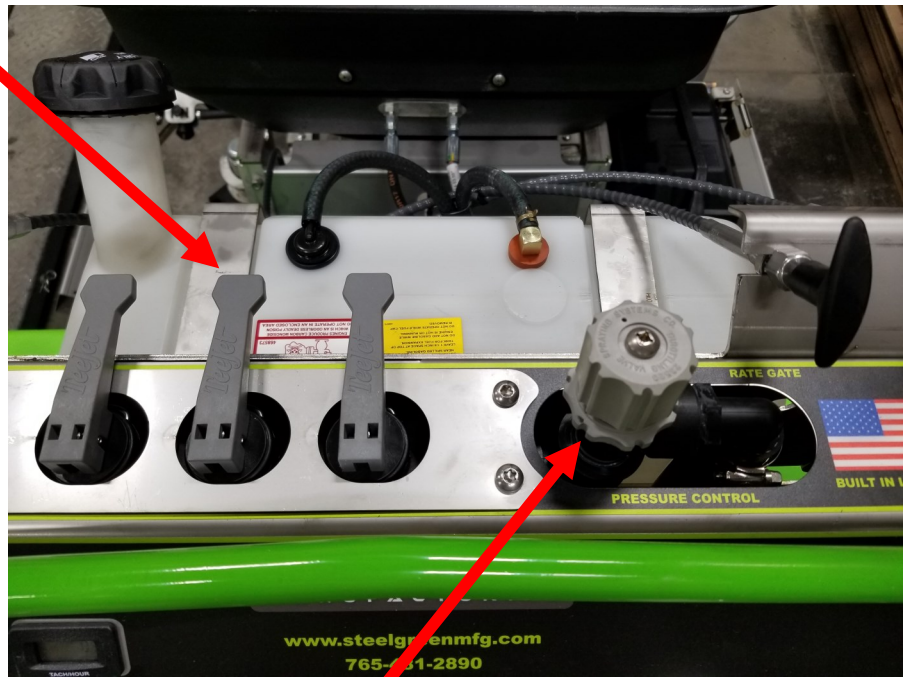


Regulator Assembly



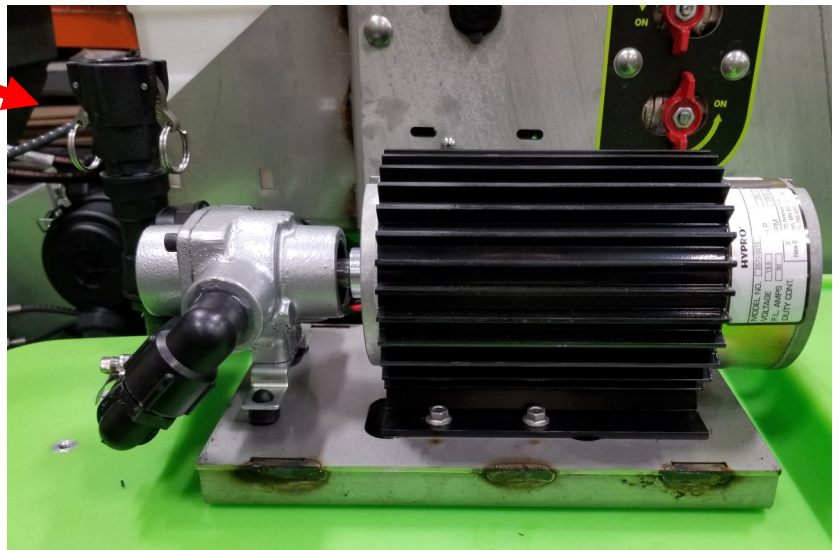
# HI FLOW PUMP

Spray Manifold Assembly.



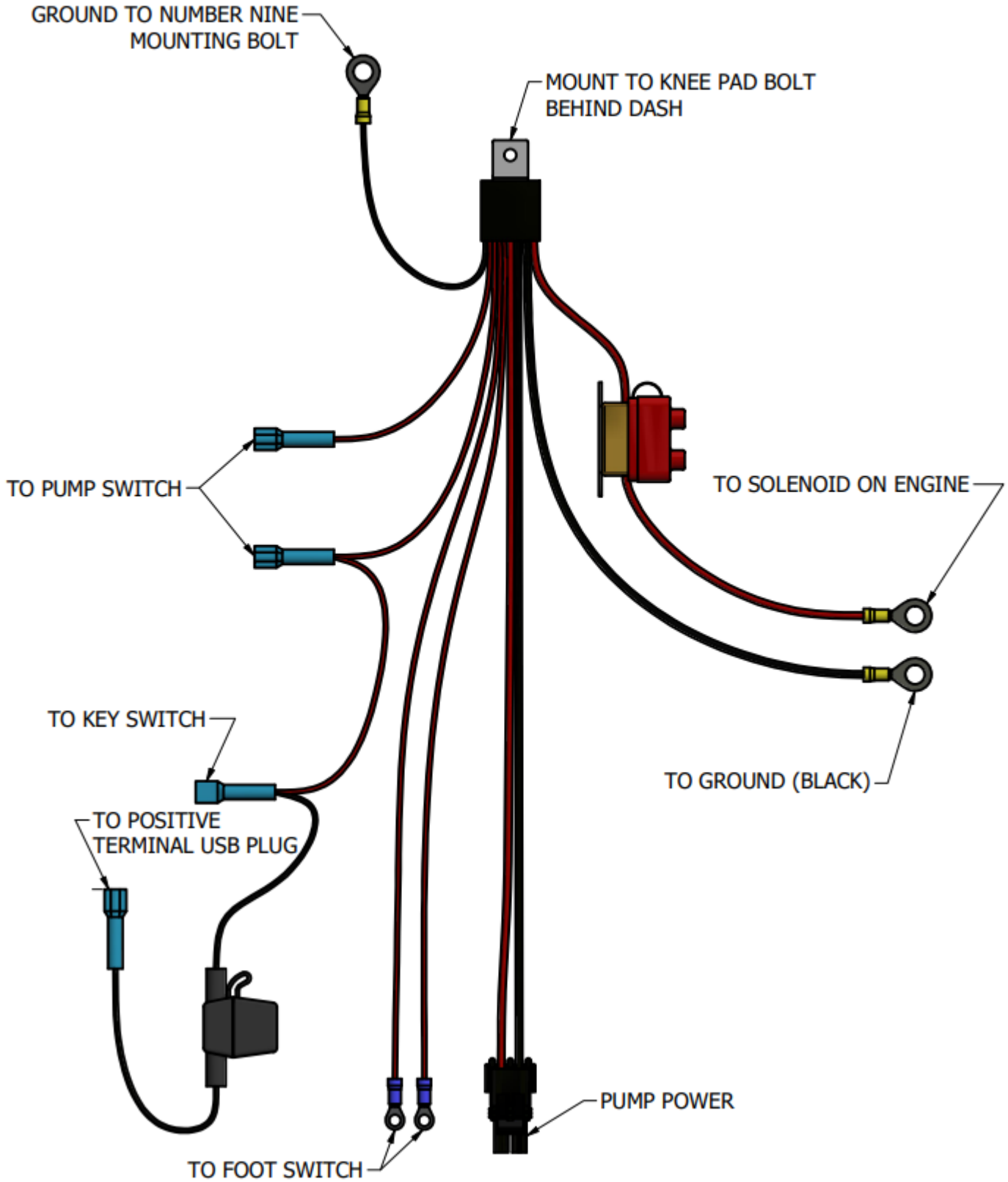
Pressure control valve

Back flush port / clean out.  
*Can be used for prime.*



# HI FLOW PUMP

HI-FLOW PUMP HARNESS  
PART NO. SG-FTS-2.2



## HI FLOW PUMP

**STEP ONE:** Disconnect the battery, *ground* first and then *power* wire.



GROUND

POWER

**NOTE:** Before starting the following steps the existing pump wiring harness and standard pump will need to be removed.

**STEP TWO:** Cut and install the "tee" fitting and regulator assembly in the return hose, securely with hose clamps.

**NOTE:** The regulator should face the operator and be clear of the steering rod.



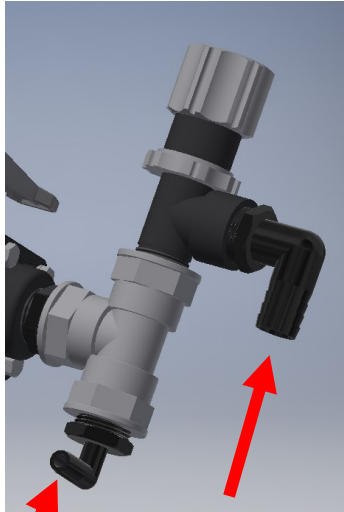
STEERING ROD

"tee fitting" S50062

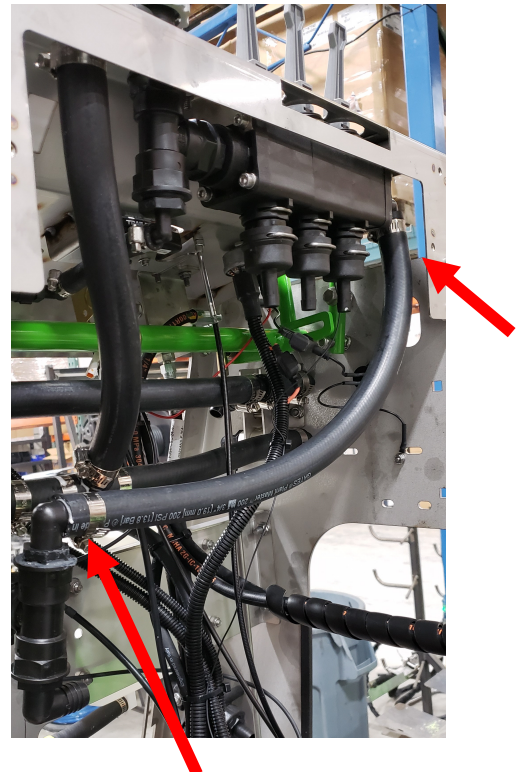
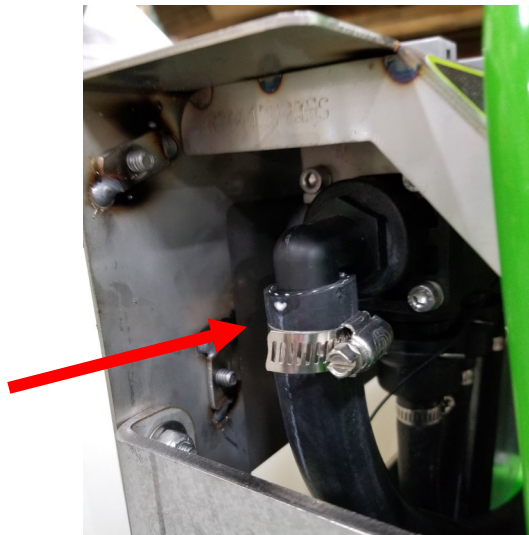
## HI FLOW PUMP

### STEP THREE:

- Cut and connect a 3/4" hose from "tee" fitting (S50062) up to the throttle valve 3/4" elbow (S52041).
- Cut and connect a 3/8" hose from "elbow" fitting (S52083) to the pressure gauge.



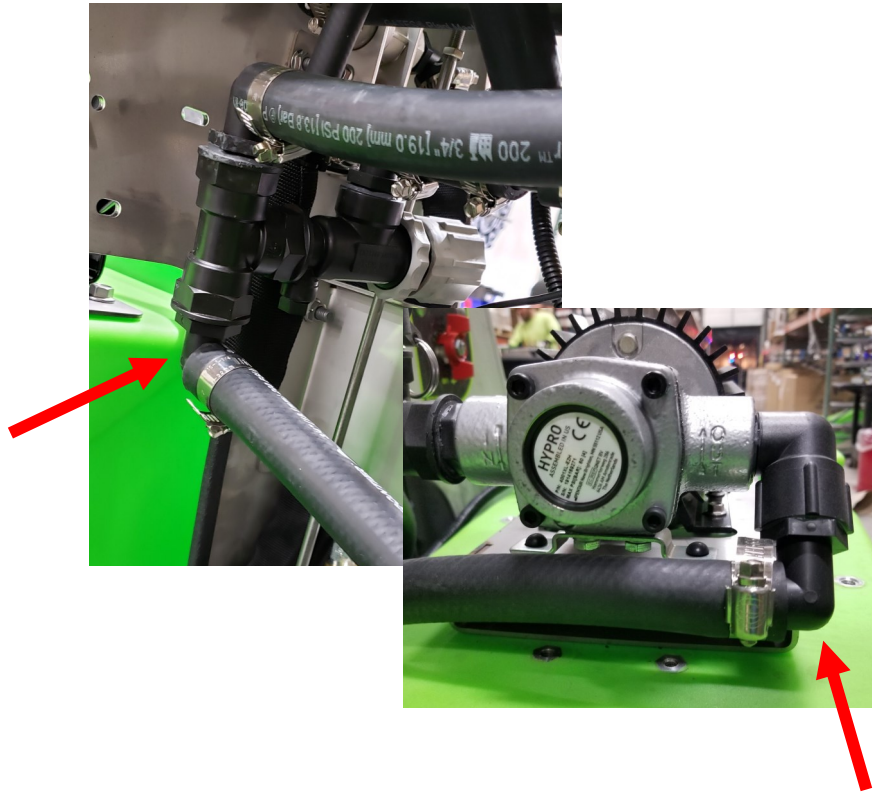
- **STEP FOUR:** Cut and connect a 3/4" hose from the top banjo fitting to the end of the manifold.



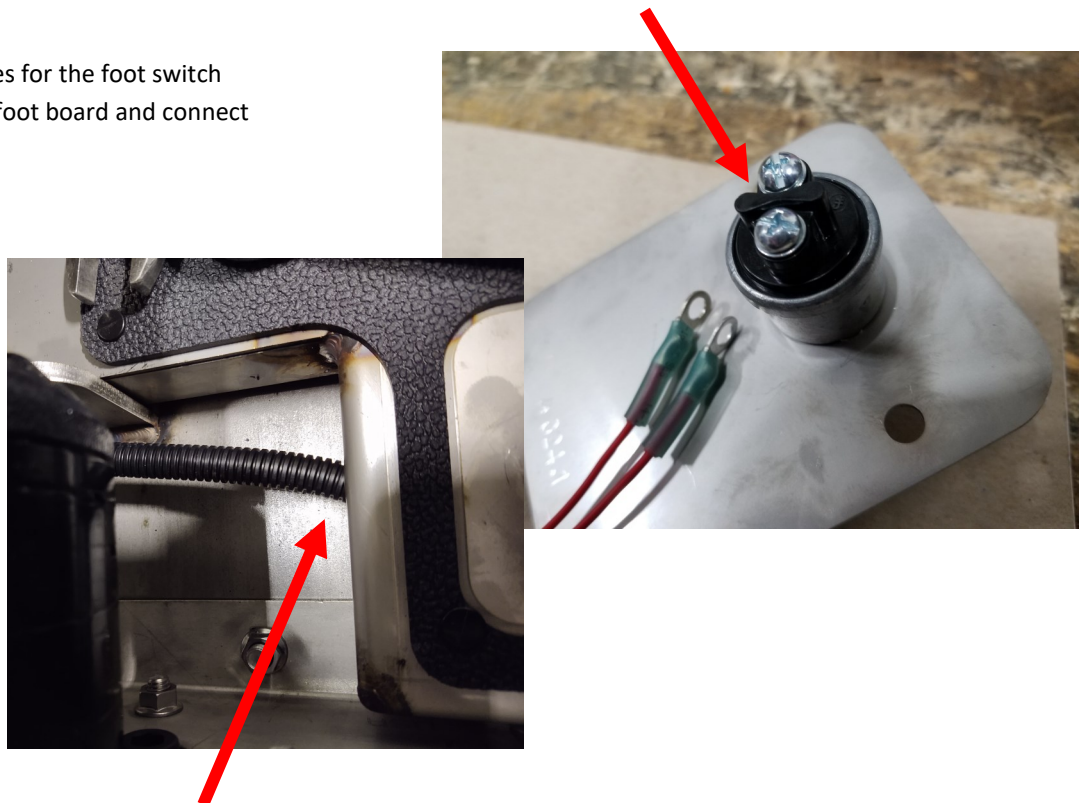


## HI FLOW PUMP

**STEP FIVE:** Cut and connect a 3/4" hose from lower banjo fitting, to hi flow pump outlet.



**STEP SIX:** Route the wires for the foot switch through the hole in the foot board and connect them to the foot switch.

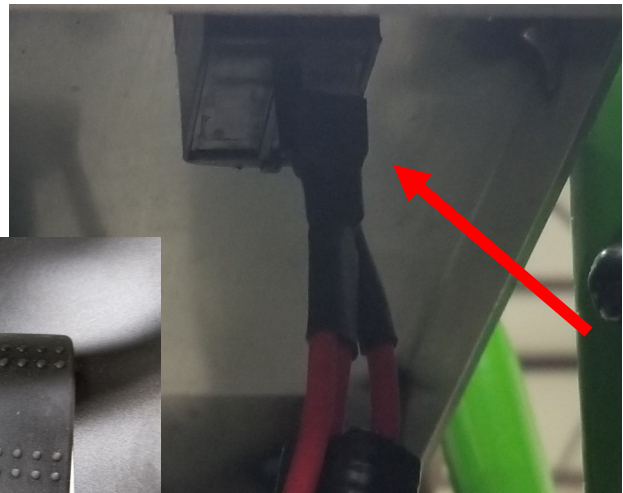


## HI FLOW PUMP

**STEP SEVEN:** Route the wires for the foot switch through the hole in the foot board and connect them to the foot switch.

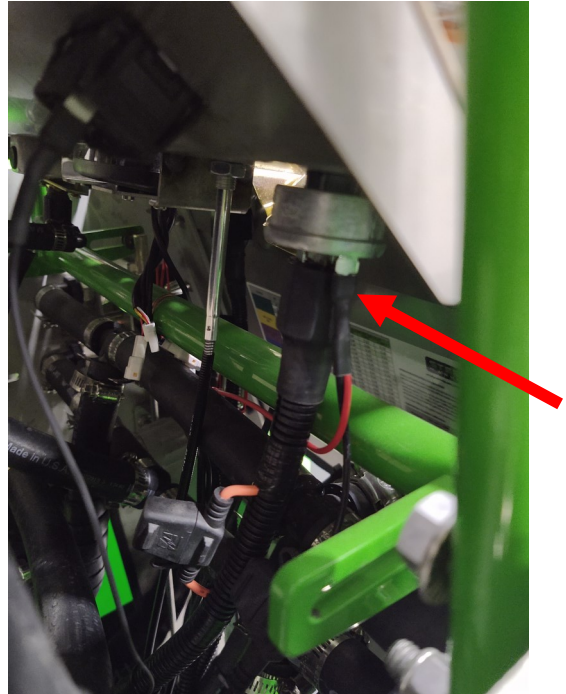


**STEP EIGHT:** Connect the pump power switch wires to the “rocker switch”

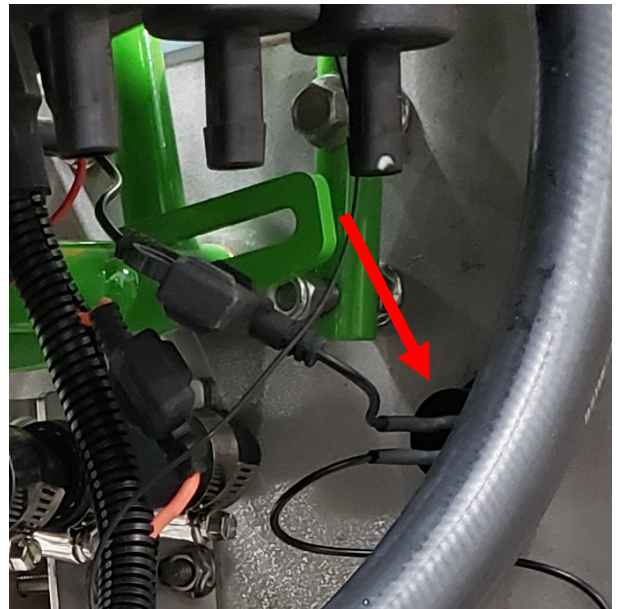


## HI FLOW PUMP

**STEP NINE:** Connect the ignition plug to the ignition switch on the dash panel.



**STEP TEN:** Connect the “fused” connector to the “usb” port.



## HI FLOW PUMP

**STEP ELEVEN:** Connect the lower ground wire to the up right cross member.



**STEP TWELVE:** Connect the pump plug from the harness to the pump.



## HI FLOW PUMP

**STEP THIRTEEN:** Reconnect the battery, *power* wire first along with pump harness power wire and then *ground*.



GROUND

POWER



Steel Green Mfg.  
 824 S State Road 39  
 Lebanon, IN 46052  
 (765)-481-2890  
[www.steelgreenmfg.com](http://www.steelgreenmfg.com)

| MANUAL<br>PART NO. | MANUAL<br>REV. | DESCRIPTION     | KIT<br>PART NO.                  |
|--------------------|----------------|-----------------|----------------------------------|
| SGM-020            | C              | SG HI FLOW PUMP | A60000-46<br>A60000-52<br>A60003 |