

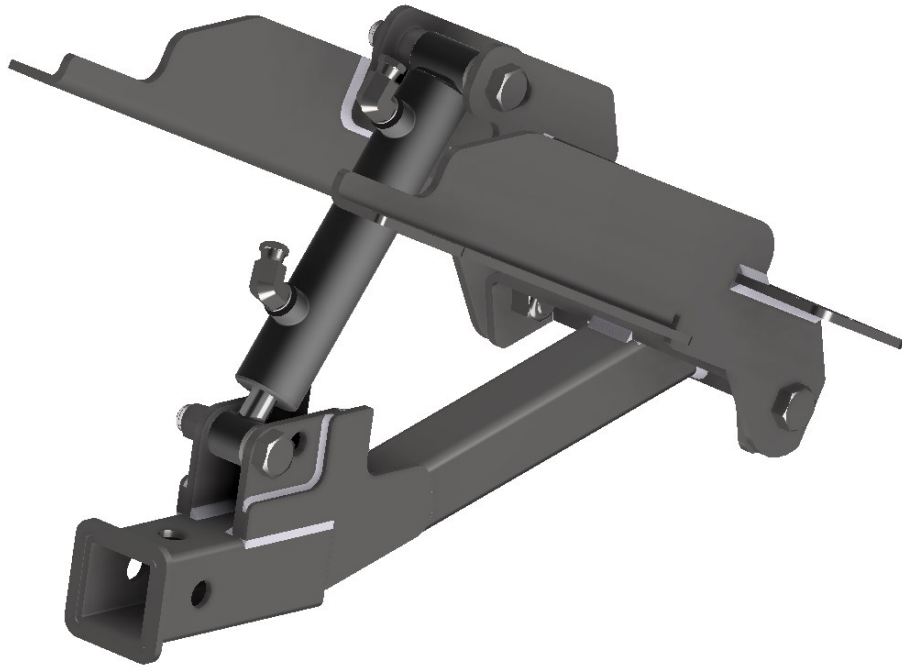
STEELGREEN[™]

M A N U F A C T U R I N G

INSTRUCTION MANUAL

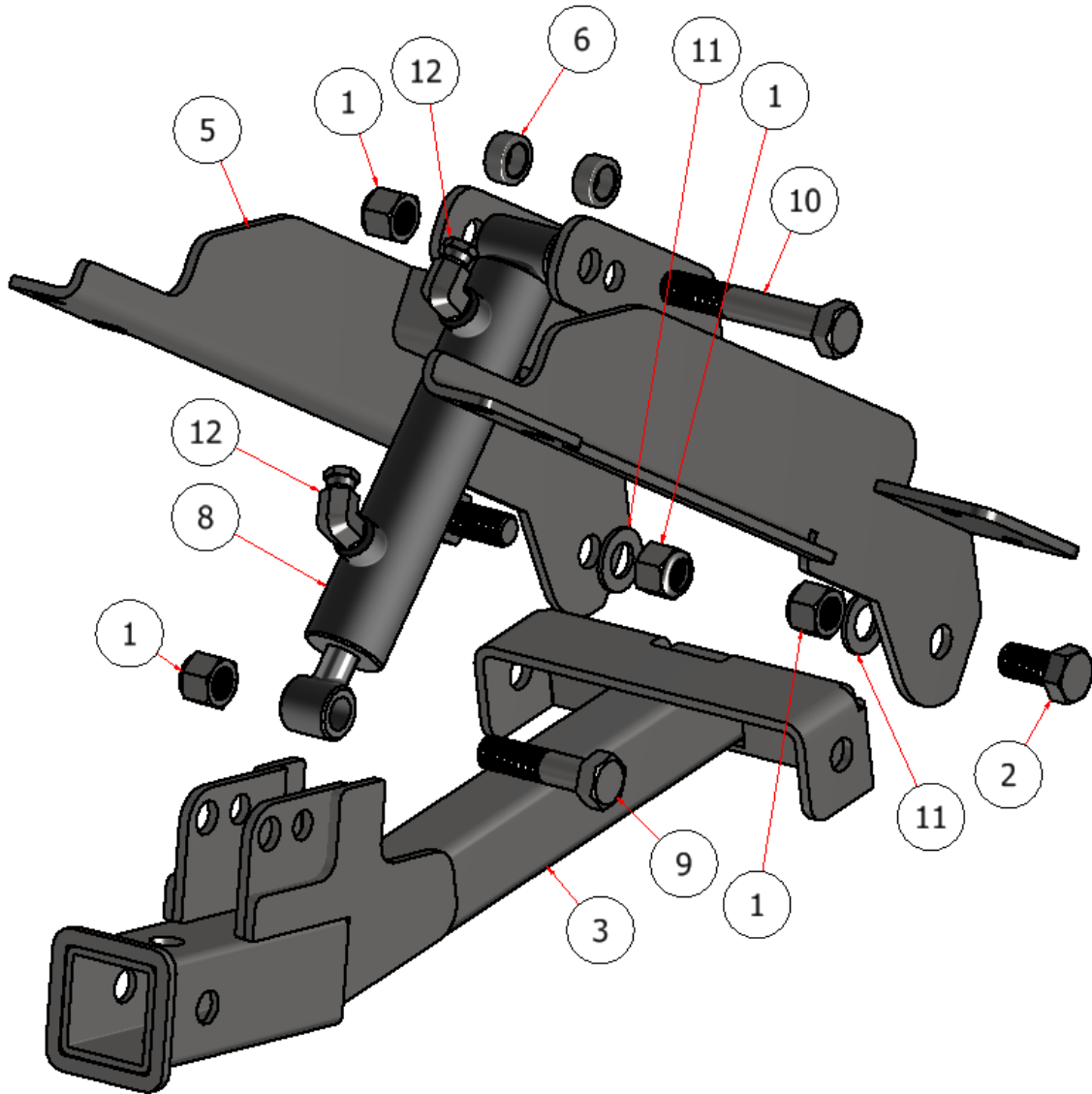
HYDRAULIC LIFT ATTACHMENT

Models: SG36, SG42, SG46, & SG52



HYDRAULIC LIFT INSTRUCTIONS

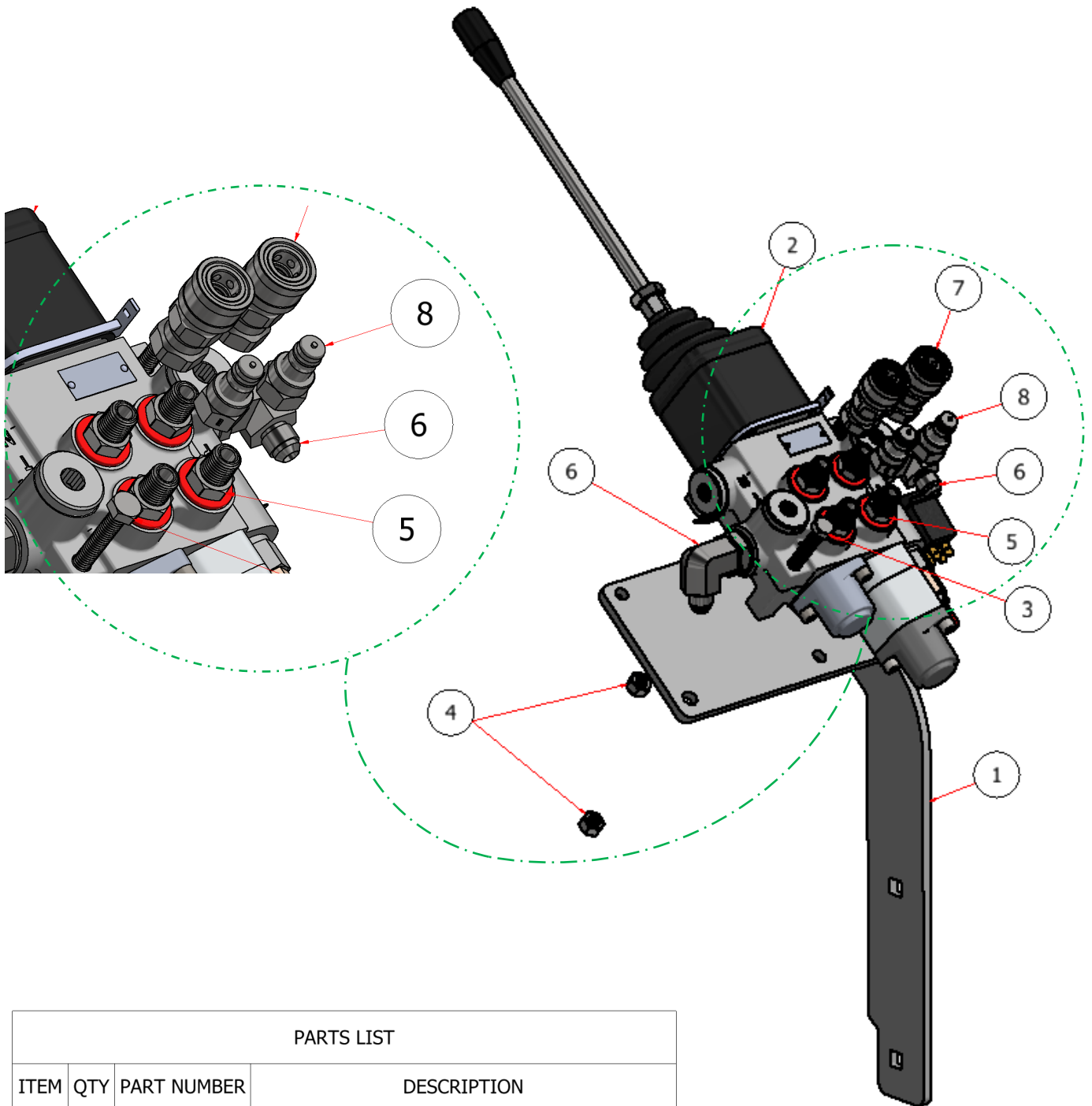
HYDRAULIC LIFT HYDRAULIC CYLINDER



PARTS LIST			
ITEM	QTY	PART NUMBER	DESCRIPTION
1	4	SS NYLOCK .750-10	HEX NUT, 3/4 NYLOCK SS
2	2	HFB .750-10X1.5	HEX BOLT, 3/4 X 1.5
3	1	W-PL004-2023	PLOW HITCH, LOWER
5	1	W-PL007-6	PLOW HITCH, UPPER
6	2	PU-2 SPACER .5	SPACER, 3/4 X 1/2
8	1	SP1002	CYLINDER, HYDRAULIC, 1.5 X 6 X .75
9	1	HFB.75-10X3	HEX BOLT, 3/4-10 X 3 SS
10	1	HFB,75-10X4.5	HEX BOLT, 3/4 X 4-1/2 SS
11	2	FWSS-34	FLAT WASHER, SS - 3/4
12	2	SG-K10007-SPHK	3/8" MNPT X 1/4" FNPT SWIVEL 90

HYDRAULIC LIFT INSTRUCTIONS

HYDRAULIC VALVE ASSEMBLY



PARTS LIST

ITEM	QTY	PART NUMBER	DESCRIPTION
1	1	PL009	SUPPORT BRACKET, PLOW CONTROL VALVE
2	1	SP10001	2 SPOOL LIFT VALVE
3	2	HFSSC-31325	HEX BOLT, SS, 5/16-18 X 2-1/2
4	2	SSNC-516	5/16" NUT, NYLOCK
5	4	H84071	FITTING, 1/2 MORB X 1/4 MNPT
6	2	H84070	FITTING 5/8 MORB X 3/8 MJIC 90
7	4	H85010	QUICK DISCONNECT, 1/4, FEMALE
8	4	H85011	QUICK DISCONNECT, 1/4, MALE

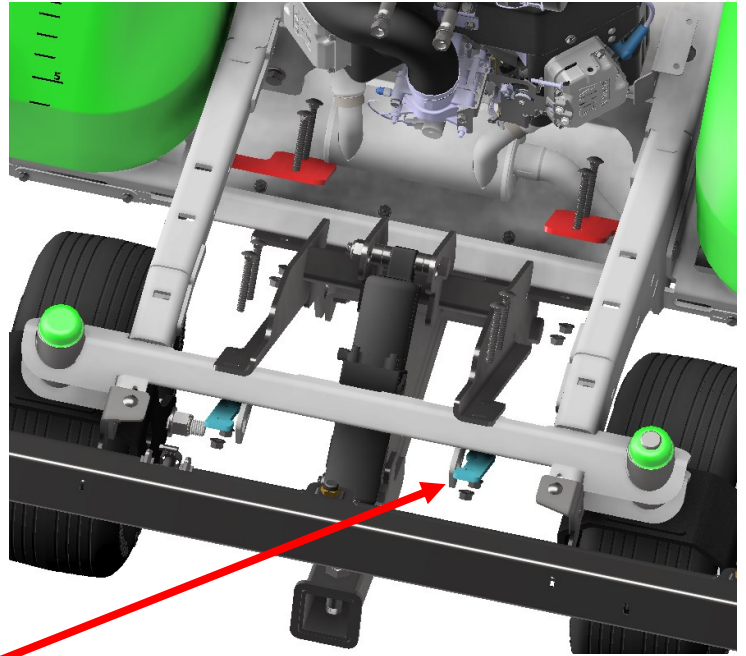
HYDRAULIC LIFT INSTRUCTIONS

STEP 1:

- Set the hydraulic lift in the frame by resting the front of the lift on top of the frame rail and the back of the lift will attach to the bottom of the frame rail.

ASSEMBLY TIP: Use a floor jack or block of wood to support the back of the lift.

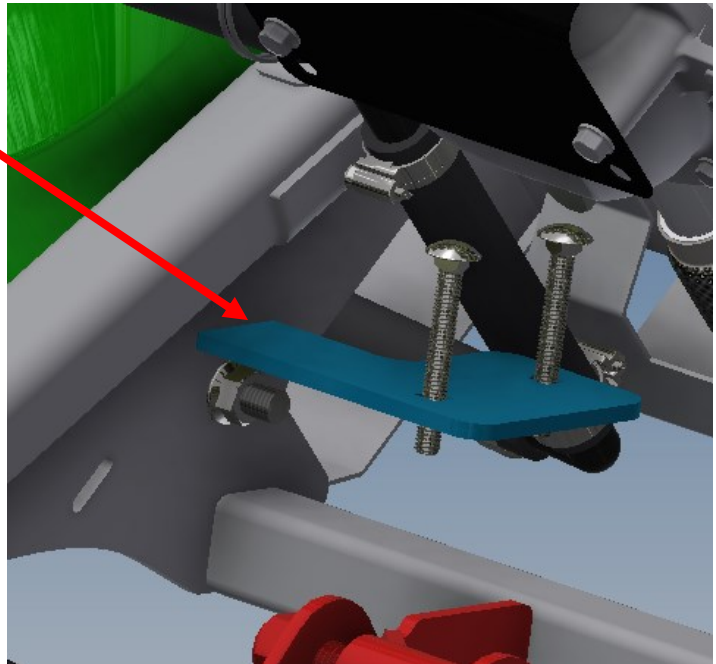
- Attach the hydraulic lift to the frame using the top brackets and (6) CB-375275 3/8" X 2-3/4" carriage bolts and (6) SSNNC-38 3/8" nuts provided with the kit.



PU6-6 FRONT BRACKET

NOTE: Note the orientation of the back brackets. Be sure the tab is facing the correct direction (One will face left and the other will face right) so the hitch is

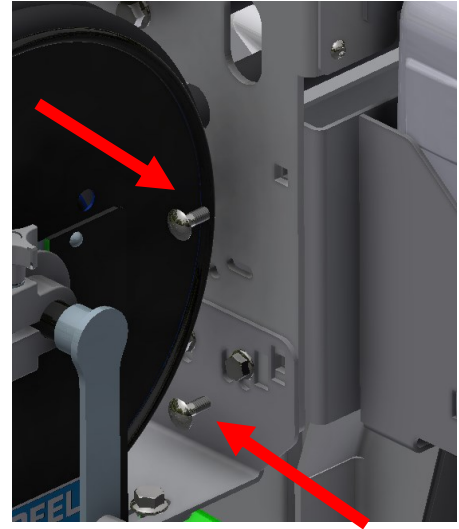
PL005 REAR BRACKET



HYDRAULIC LIFT INSTRUCTIONS

STEP 2:

- Remove the existing (2) bolts from the gas tank support.



- Attach the control valve assembly to the side of the upright using (2) 3/8 X 1" carriage bolts provided with the kit and reuse the nuts that were removed.

NOTE:

- *If your machine is equipped with an "all liquid" tank and is the Steel Green current design (Fig.1) the valve assembly can be flipped to allow the control valve to be mounted.*
- *If your machine is equipped with the old valve design, you can purchase the updated brackets.*

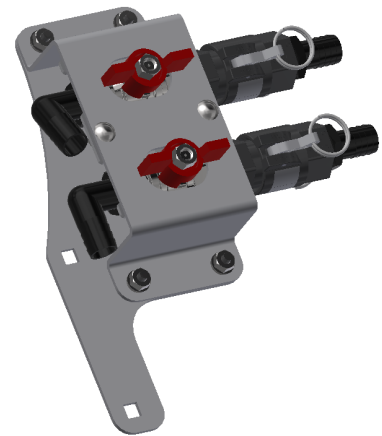
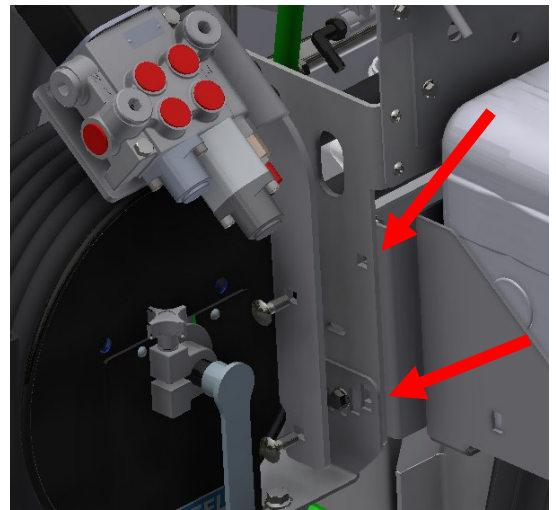


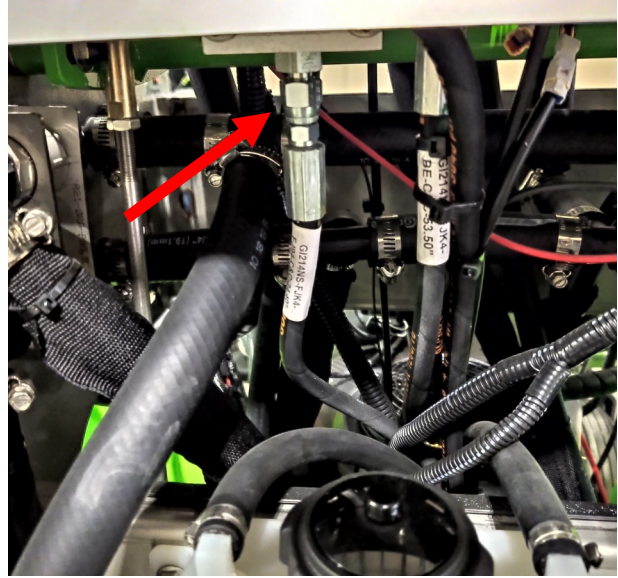
Fig. 1

HYDRAULIC LIFT INSTRUCTIONS

NOTE: Before starting the following steps, drain the hydraulic oil from the machine. Refer to Steel Green Hydraulic oil change manual.

WARNING!

Connecting the hoses incorrectly will blow the seals out of the snow plow valve & void the Steel Green Warranty.



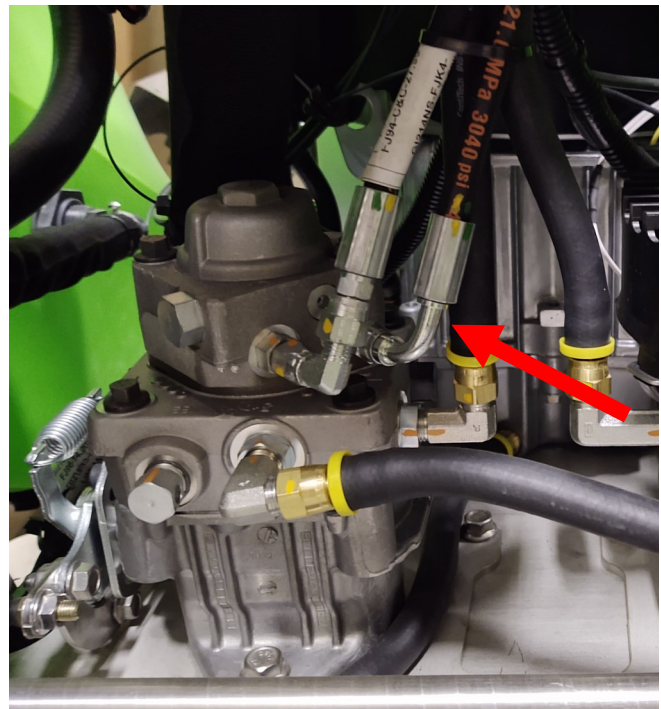
STEP 3:

- Locate the hose that runs from the bottom port of the hopper control valve down to the left pump.

NOTE: Leave the hose zip tied in the bundle and tuck the ends out of the way.

- Disconnect each end of the hose and use the (2) 1/4" jic red plugs provided with the kit to cap the ends of the hose.

TIP: Disconnect the end from the hopper control valve first and hold the end of the hose up to prevent excess oil spillage. Then turn the end down into a container to drain the rest of the excess oil. Have a rag and or container ready to catch excess oil.



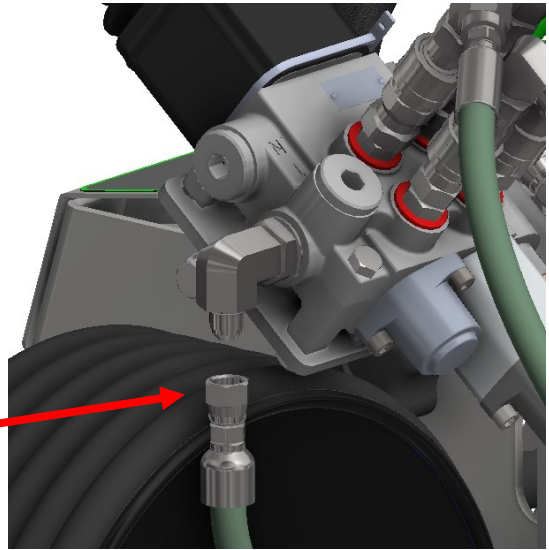
HYDRAULIC LIFT INSTRUCTIONS

NOTE: If your machine is equipped with a Hill Side Assist system, Proceed to Page 9 (STEP 4).

STEP 4:

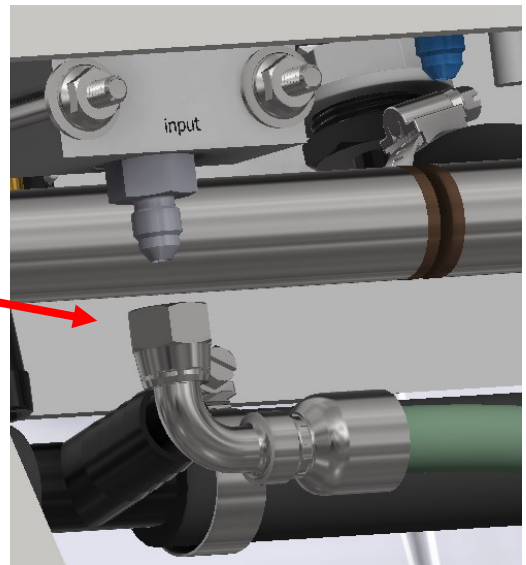
- Using (1) of the 38" hoses provided with the kit, attach the end with the straight fitting to the return port of the control valve.

A



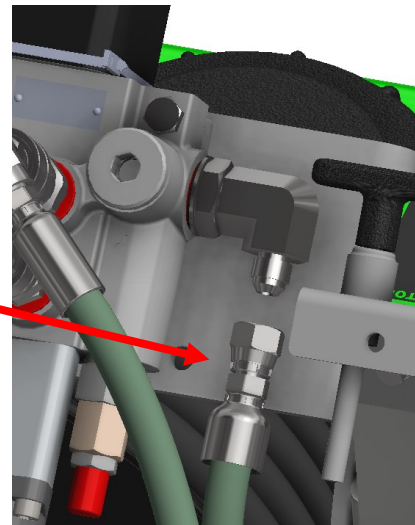
- Attach the other end of the hose to the input port of the hopper control valve. (end with 90° fitting)

A



- Using the other 38" hose provided with the kit, attach the end with the straight fitting to the supply port of the control valve.

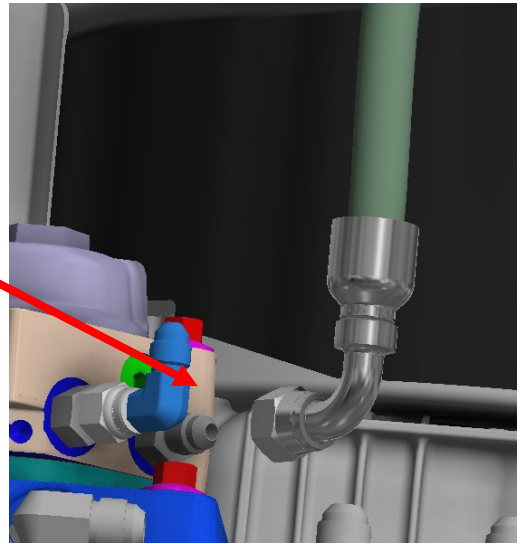
B



HYDRAULIC LIFT INSTRUCTIONS

- Attach the other end of the hose to the hydraulic pump. (*end with 90° fitting*)

B



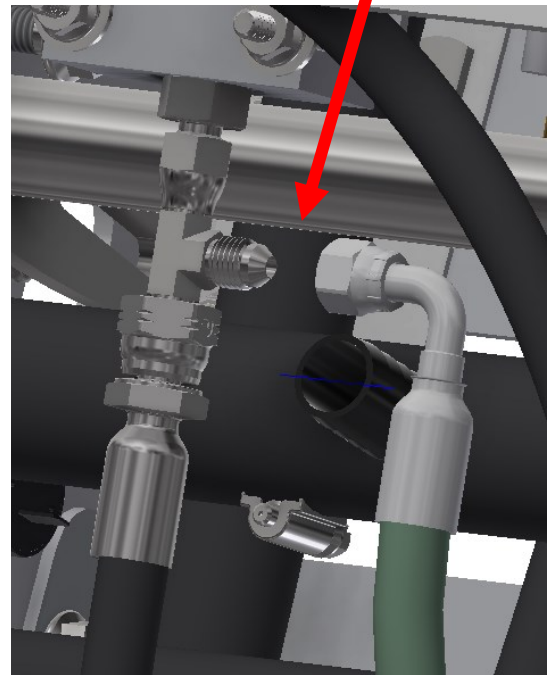
NOTE:

- *Some parts not shown for clarity.*
- *Before starting the following steps, remove the supply hose from the Hill Side Assist system. Refer to the Steel Green HSA manual.*

STEP 4: (HSA)

- Using a 38" hose provided with the kit, attach the end with the 90° fitting to the tee fitting hydraulic control valve.

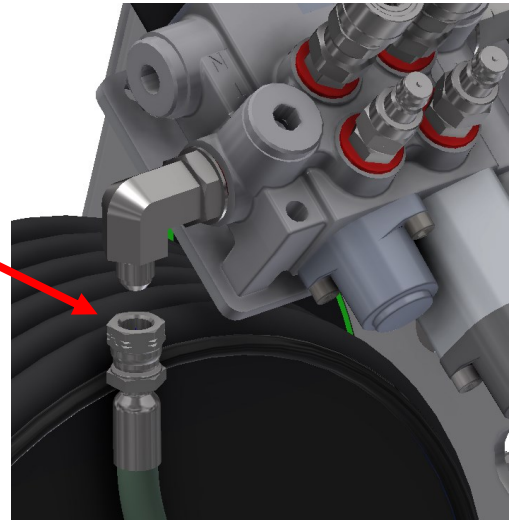
A



HYDRAULIC LIFT INSTRUCTIONS

- Attach the other end of the hose to the inlet port on the plow control valve.

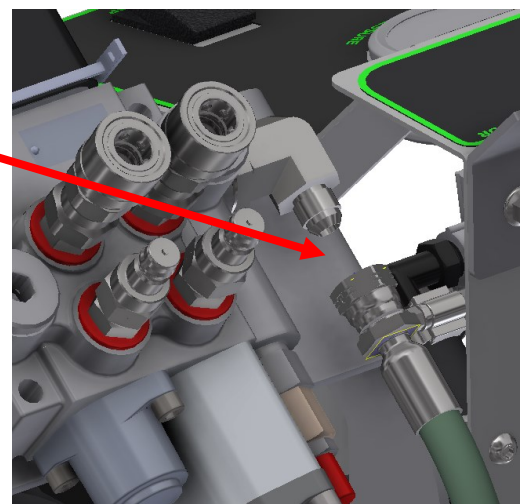
A



STEP 5: (HSA)

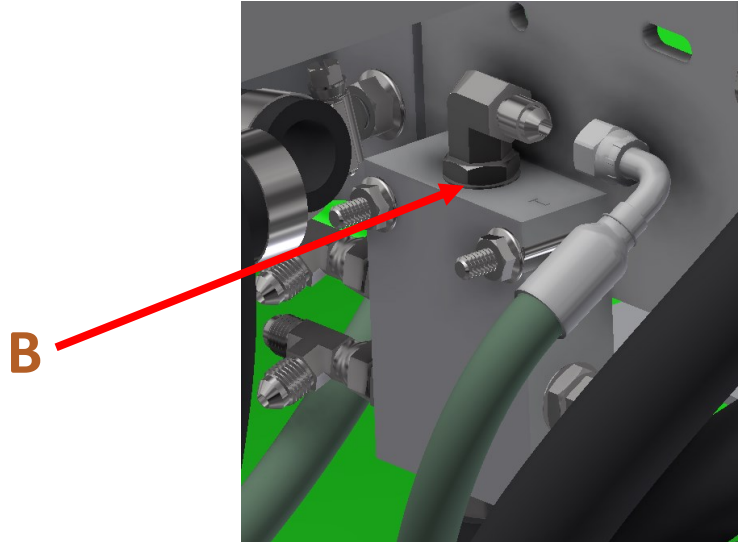
- Using the other 38" hose provided with the kit, attach the straight end to the outlet port on the plow control valve.

B



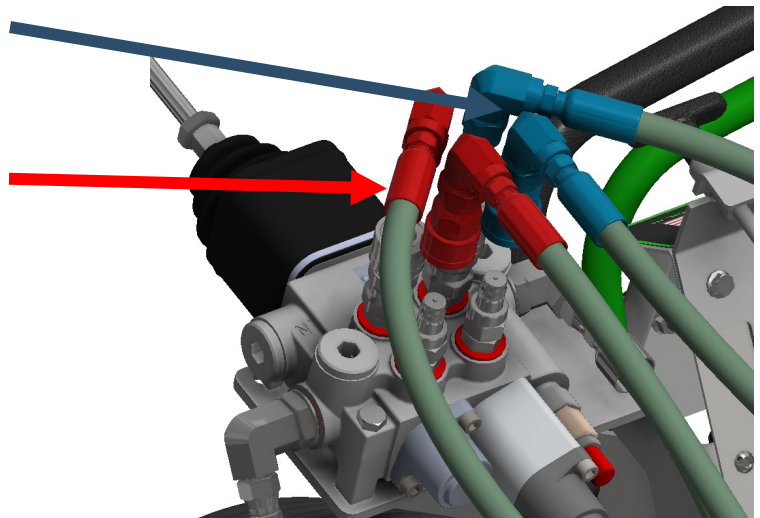
HYDRAULIC LIFT INSTRUCTIONS

- Attach the other end to inlet port of the hsa valve.



STEP: 6

- Connect the hoses from the plow hitch to the *right side (UP & DOWN)* of the control valve.
- Connections for (*LEFT & RIGHT*) function connect to the *left side* of the control valve.



STEP 7:

- Top off the hydraulic oil tank and start the machine.
- Operate the plow left/right and up/down.

NOTE: The cylinders and control valve are empty so it will take a few cycles to fill them and get the air out of the system.

- Top off the oil tank as it gets low, it should take ap-

CAUTION!

DO NOT let the machine run out of hydraulic oil



NOTES



Steel Green Mfg.
824 S State Road 39
Lebanon, IN 46052
(765)-481-2890
www.steelgreenmfg.com

MANUAL PART NO.	MANUAL REV.	DESCRIPTION	KIT PART NO.
SGM-040	A	SG HYDRAULIC LIFT ATTACHMENT	K10081