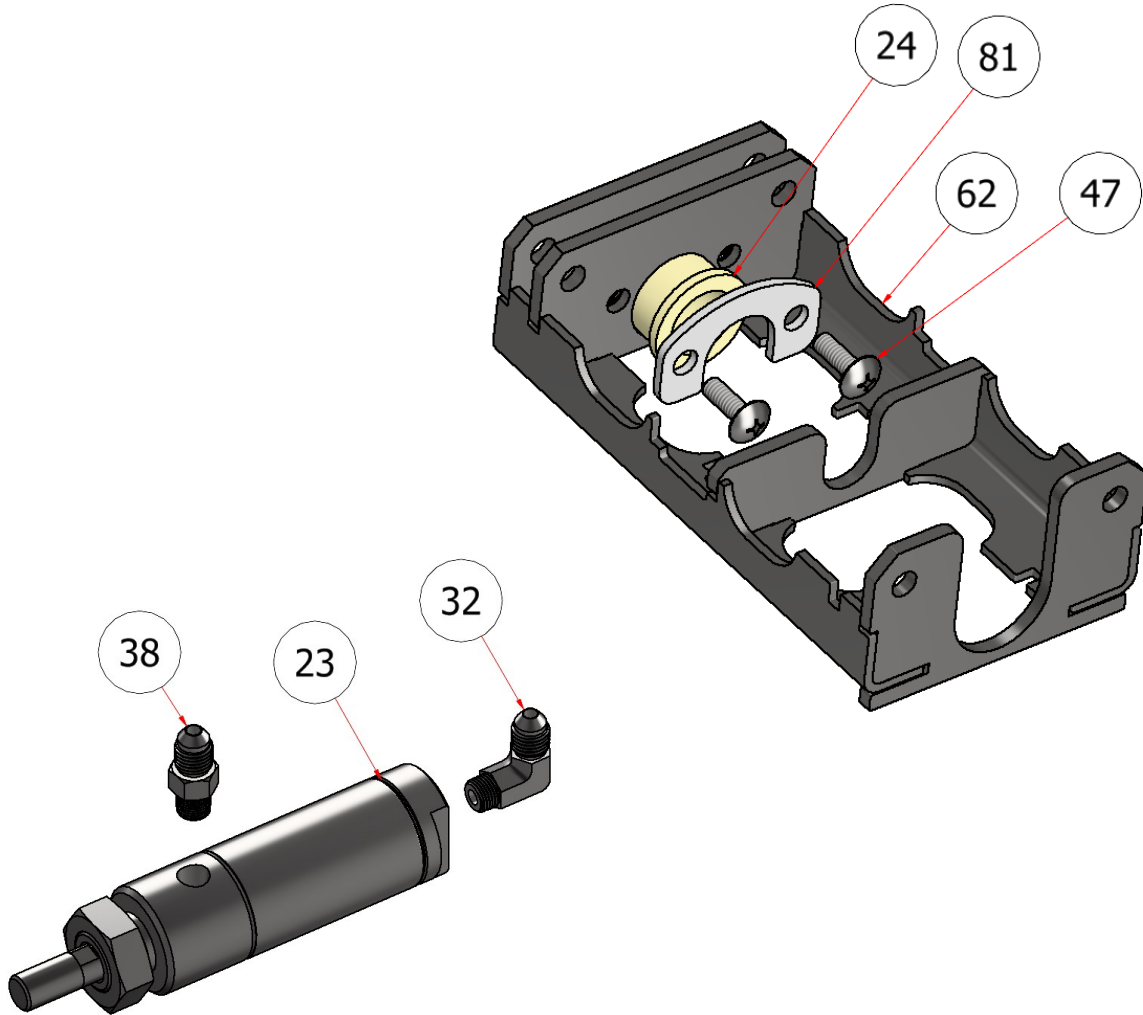


# SGXL HILL SIDE ASSIST

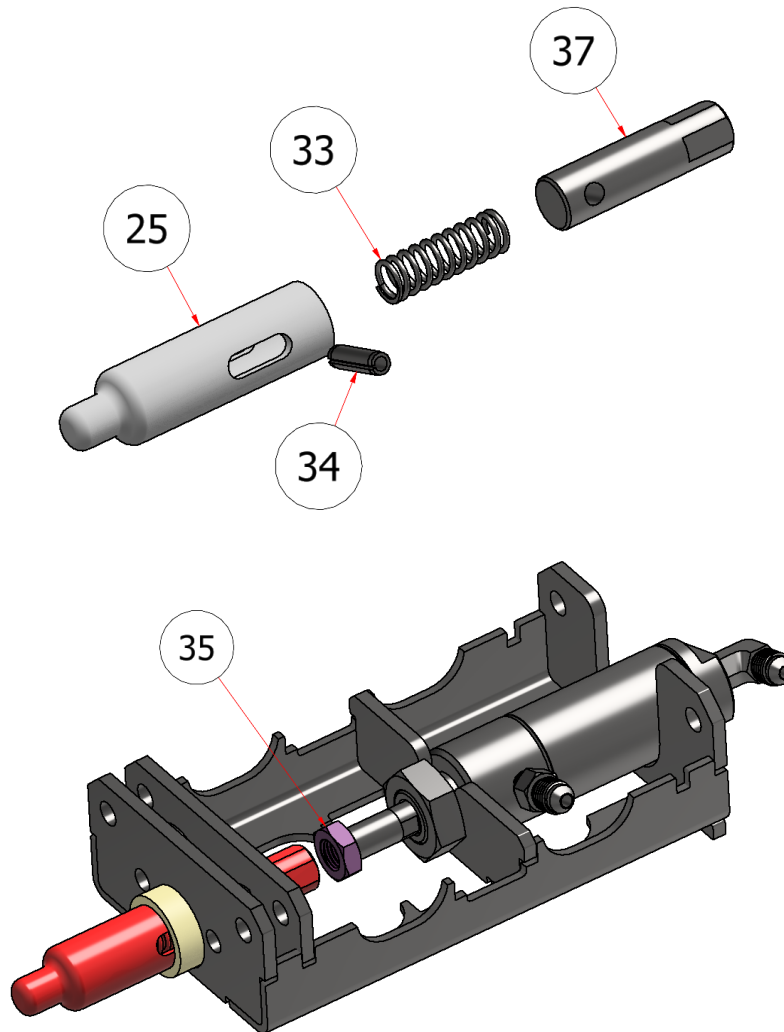
DRAWING NO. SGXLEV-026 REV. 2



PARTS LIST			
ITEM	QTY	PART NUMBER	TITLE
24	2	6389K557	7/8" NYLON SLEEVE, BEARING, STRAIGHT STEER
47	6	TRPC-1434S	PHILLIPS PAN HEAD MACHINE SCREW, SS - 1/4-20 x 3/4
62	2	W23-207	SUPPORT, HILL SIDE ASSIST,SGXL
81	2	R23-311	SGXL HSA BUSHING BRACKET

PARTS LIST			
ITEM	QTY	PART NUMBER	TITLE
23	2	H80601	HYDRAULIC CYLINDER, HSA
32	2	H84038	TYPE 316 SS 37 DEGREE FLARED TUBE FITTING
38	2	H84039	FITTING, 14" JIC X 1/8" NPT

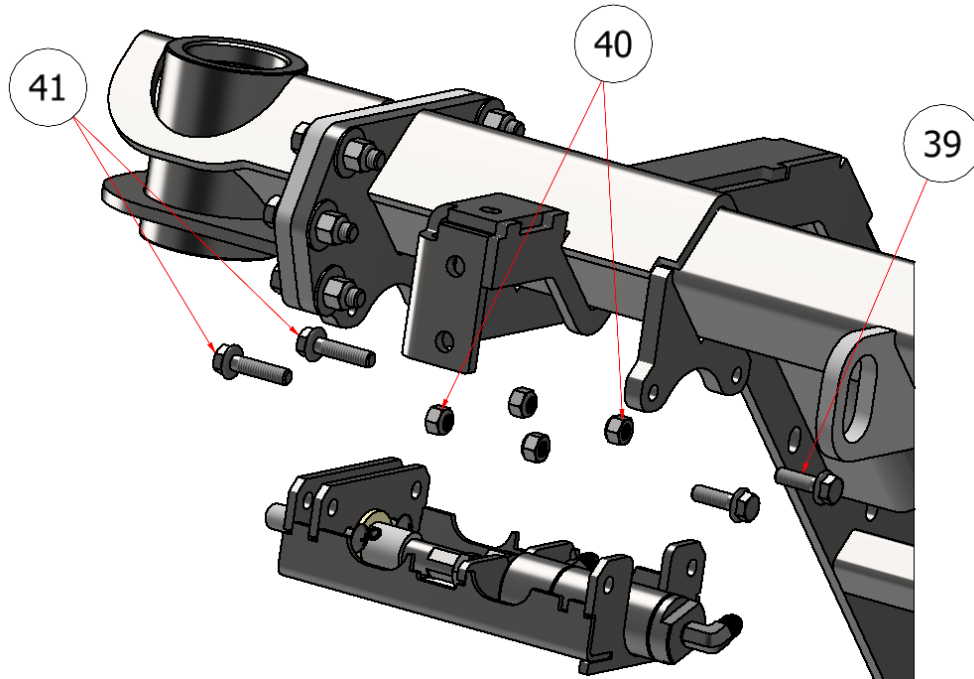
**NOTE:** Quantities in the parts list above are total per machine. Please note the quantities used in the sub-assemblies.



PARTS LIST			
ITEM	QTY	PART NUMBER	TITLE
25	2	R31027	SPRING PIN, HILL ASSIST
33	2	965K352	1.5 X .5 OD COMPRESSION SPRING
37	2	R31029	CYLINDER TOP, HILL ASSIST

PARTS LIST			
ITEM	QTY	PART NUMBER	TITLE
35	2	91847A515	7/16-20 JAM NUT

**NOTE:** Quantities in the parts list above are total per machine. Please note the quantities used in the sub-assemblies.



PARTS LIST			
ITEM	QTY	PART NUMBER	TITLE
39	5	HFSSC-3131	HEX FLANGE BOLT, SS - 5/16 X 1
40	8	SSNC-516	NYLOCK, SS - 5/16-18

**NOTE:** Quantities in the parts list above are total per machine. Please note the quantities used in the sub-assemblies.