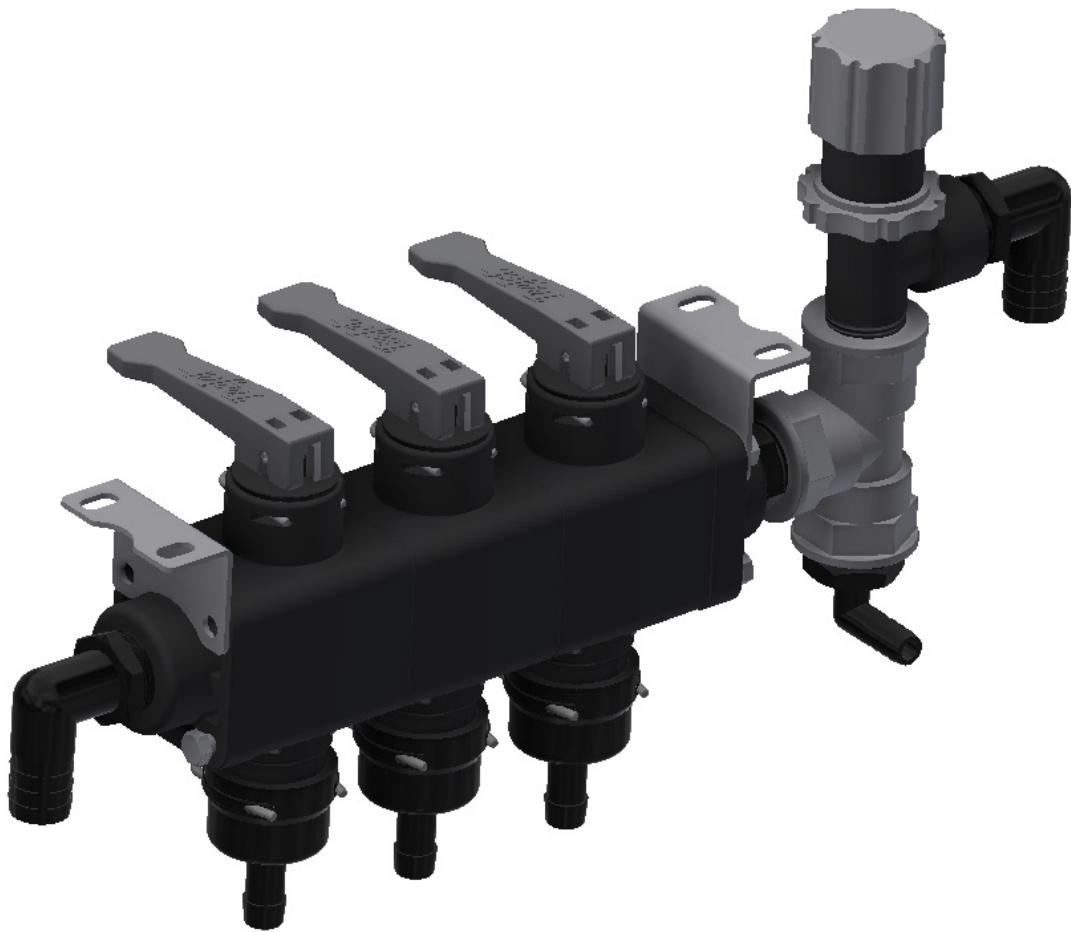


INSTRUCTION MANUAL

TEEJET MANIFOLD REPLACEMENT

Models: SG36, SG42, SG46, & SG52



TEEJET MANIFOLD REPLACEMENT INSTRUCTIONS

STEP 1: Disconnect the battery, *ground first & then power cable.*



GROUND

POWER

ENGINE SUPPLY HOSE

PRESSURE RELIEF

STEP 2:

- Squeeze the hose clamp & slide it back & disconnect the fuel supply hose.
- Disconnect the pressure relief hose.



CAUTION
Beware of excess fuel in the hoses & fuel spillage.

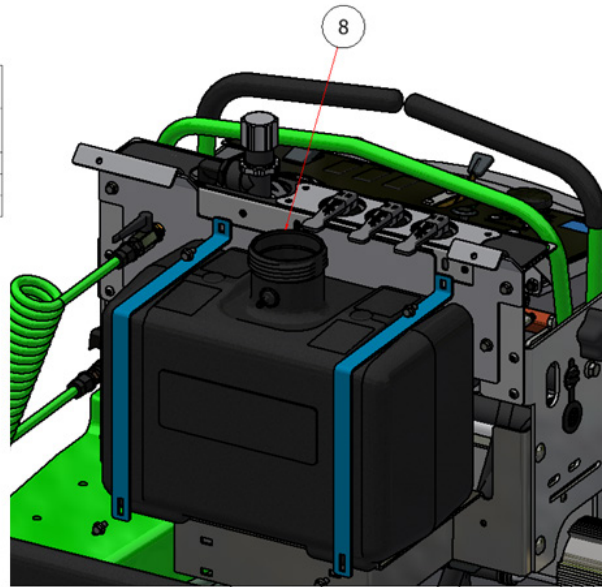
WARNING
Flammable gas.

TEEJET MANIFOLD REPLACEMENT INSTRUCTIONS

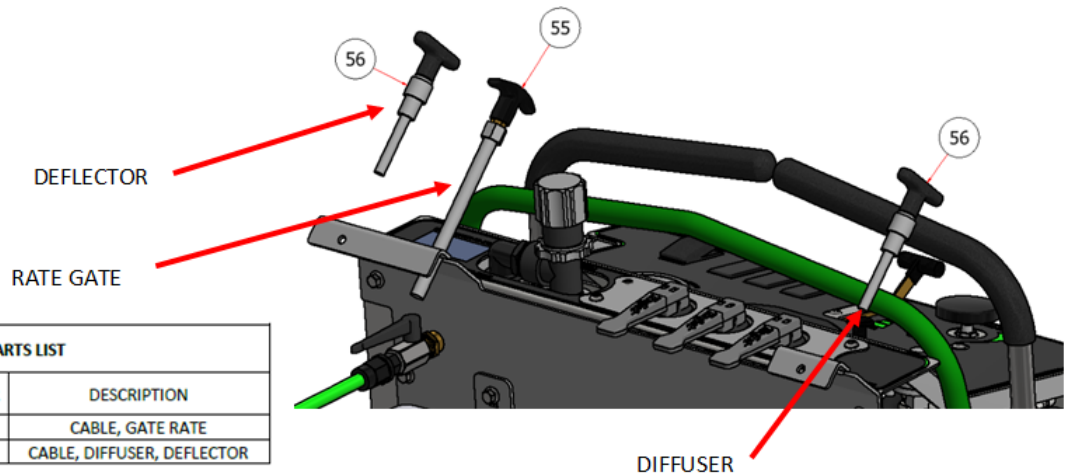
STEP 3:

- Loosen & remove the straps securing the tank.
- Remove the tank from the support.

PARTS LIST			
ITEM	QTY	PART NUMBER	DESCRIPTION
8	1	M10005-A	FUEL TANK, 5 GALLON
9	2	R21-249	SG SYMCO GAS TANK STRAP
11	6	HFSSC-145	HEX FLANGE BOLT, SS - 1/4-20 x 1/2



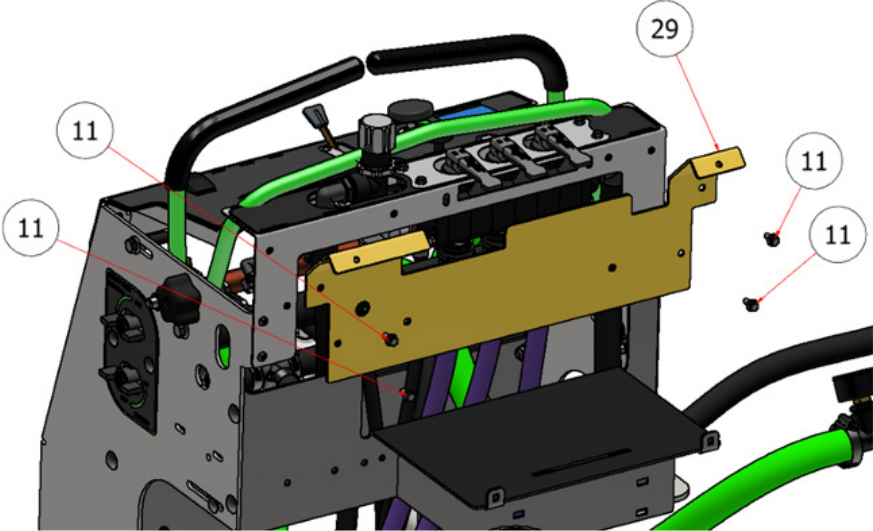
STEP 4: Loosen & remove the cables from the panel.



PARTS LIST			
ITEM	QTY	PART NUMBER	DESCRIPTION
55	1	D71014	CABLE, GATE RATE
56	2	D71003	CABLE, DIFFUSER, DEFLECTOR

TEEJET MANIFOLD REPLACEMENT INSTRUCTIONS

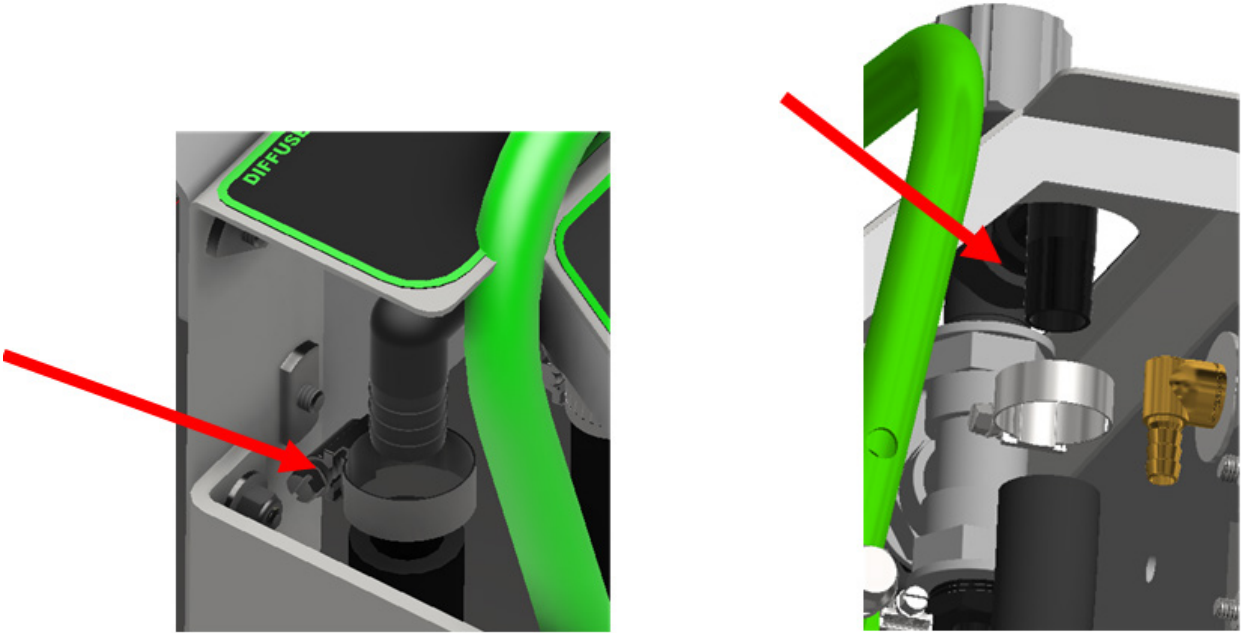
STEP 5: Remove the front panel from the upright.



PARTS LIST			
ITEM	QTY	PART NUMBER	DESCRIPTION
11	10	HFSSC-145	HEX FLANGE BOLT, SS - 1/4-20 x 1/2
29	1	R21-079	SG CABLE MOUNT

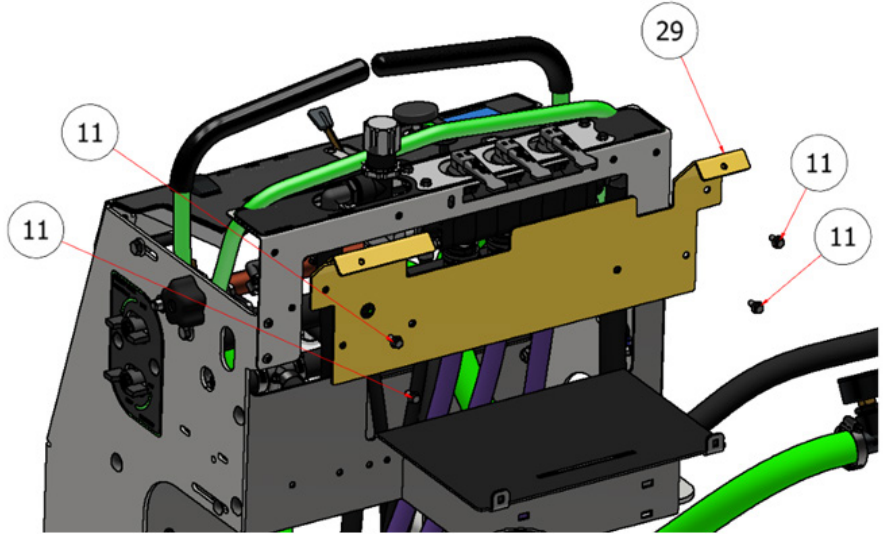
STEP 6:

- Disconnect the hoses from the manifold.



TEEJET MANIFOLD REPLACEMENT INSTRUCTIONS

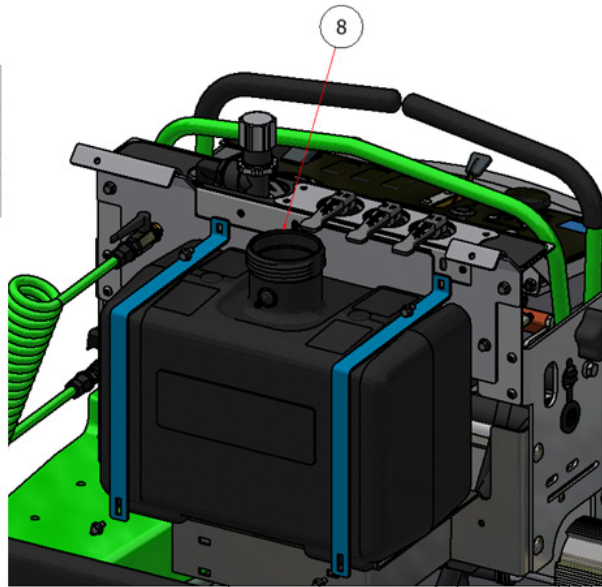
STEP 8: Reattach the panel to the upright.



PARTS LIST			
ITEM	QTY	PART NUMBER	DESCRIPTION
11	10	HFSSC-145	HEX FLANGE BOLT, SS - 1/4-20 x 1/2
29	1	R21-079	SG CABLE MOUNT

STEP 9: Place the fuel tank back in the support & secure it with the straps.

PARTS LIST			
ITEM	QTY	PART NUMBER	DESCRIPTION
8	1	M10005-A	FUEL TANK, 5 GALLON
9	2	R21-249	SG SYMCO GAS TANK STRAP
11	6	HFSSC-145	HEX FLANGE BOLT, SS - 1/4-20 x 1/2



TEEJET MANIFOLD REPLACEMENT INSTRUCTIONS

STEP 10: Reattach the cable controls to the panel.

PARTS LIST			
ITEM	QTY	PART NUMBER	DESCRIPTION
55	1	D71014	CABLE, GATE RATE
56	2	D71003	CABLE, DIFFUSER, DEFLECTOR

ENGINE SUPPLY HOSE PRESSURE RELIEF

STEP 11:

- Connect the fuel lines to the tank.



- Reconnect the battery, *ground first & then power cable.*





Steel Green Mfg.
824 S State Road 39
Lebanon, IN 46052
www.steelgreenmfg.com

(765)-481-2890

MANUAL PART NO.	MANUAL REV.	DESCRIPTION	KIT PART NO.
SGM-059	1	TEEJET REPLACEMENT	SS1301-STD